

For Research Use Only

RPS3 Recombinant antibody, PBS Only (Detector)

Catalog Number: 84947-2-PBS



Basic Information

Catalog Number:

84947-2-PBS

Concentration:

1 mg/ml

Source:

Rabbit

Isotype:

IgG

Immunogen Catalog Number:

AG7346

GenBank Accession Number:

BC003137

GeneID (NCBI):

6188

UNIPROT ID:

P23396

Full Name:

ribosomal protein S3

Calculated MW:

27 kDa

Purification Method:

Protein A purification

CloneNo.:

242504B5

Applications

Tested Applications:

Cytometric bead array, Sandwich ELISA, Indirect ELISA, Sample test

Species Specificity:

human

Background Information

Storage

Storage:

Store at -80°C.

The product is shipped with ice packs. Upon receipt, store it immediately at -80°C

Storage Buffer:

PBS Only

For technical support and original validation data for this product please contact:

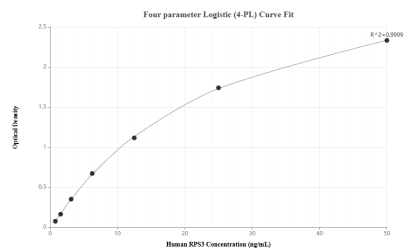
T: 4006900926

E: Proteintech-CN@ptglab.com

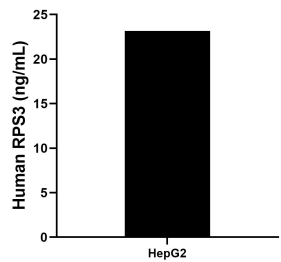
W: ptgcn.com

This product is exclusively available under Proteintech Group brand and is not available to purchase from any other manufacturer.

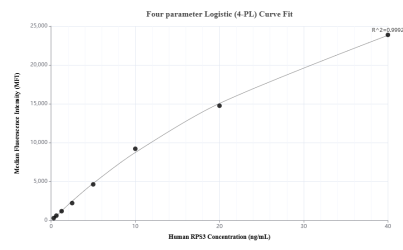
Selected Validation Data



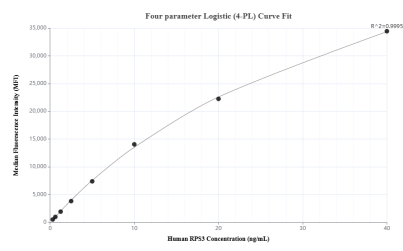
Sandwich ELISA standard curve of MP01686-2, Human RPS3 Recombinant Matched Antibody Pair - PBS only. 84947-3-PBS was coated to a plate as the capture antibody and incubated with serial dilutions of standard Ag7346. 84947-2-PBS was HRP conjugated as the detection antibody. Range: 0.781-50 ng/mL



The mean RPS3 concentration was determined to be 23.17 ng/mL in HepG2 cell extract based on a 1.0 mg/mL extract load.



Cytometric bead array standard curve of MP01686-2, RPS3 Recombinant Matched Antibody Pair, PBS Only. Capture antibody: 84947-3-PBS. Detection antibody: 84947-2-PBS. Standard: Ag7346. Range: 0.313-40 ng/mL



Cytometric bead array standard curve of MP01686-1, RPS3 Recombinant Matched Antibody Pair, PBS Only. Capture antibody: 84947-1-PBS. Detection antibody: 84947-2-PBS. Standard: Ag7346. Range: 0.313-40 ng/mL