

For Research Use Only

APOH Recombinant antibody, PBS Only (Detector)

Catalog Number: 84943-2-PBS



Basic Information

Catalog Number:

84943-2-PBS

Size:

1 mg/ml

Source:

Rabbit

Isotype:

IgG

GenBank Accession Number:

NM_000042.2

GeneID (NCBI):

350

UNIPROT ID:

P02749

Full Name:

apolipoprotein H (beta-2-glycoprotein I)

Calculated MW:

38 kDa

Observed MW:

43-55 kDa

Purification Method:

Protein A purification

CloneNo.:

242454E4

Applications

Tested Applications:

WB, Cytometric bead array, Sandwich ELISA, Indirect ELISA, Sample test

Species Specificity:

human

Background Information

Apolipoprotein H (ApoH), also known as beta2-glycoprotein I (B2-GPI), is a plasma glycoprotein, primarily synthesized in the liver. It has an important function in blood coagulation and clearance of apoptotic bodies from the circulation. ApoH is also an important actor of host innate immune response through its capacity to bind with high affinity to a large panel of pathogens or their proteins. ApoH is a 54 kDa plasma glycoprotein.

Storage

Storage:

Store at -80°C.

The product is shipped with ice packs. Upon receipt, store it immediately at -80°C

Storage Buffer:

PBS Only

For technical support and original validation data for this product please contact:

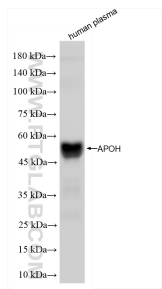
T: 4006900926

E: Proteintech-CN@ptglab.com

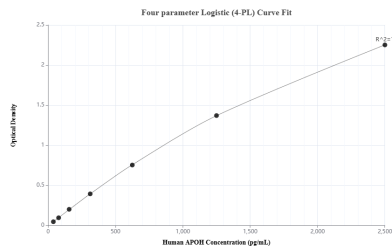
W: ptgcn.com

This product is exclusively available under Proteintech Group brand and is not available to purchase from any other manufacturer.

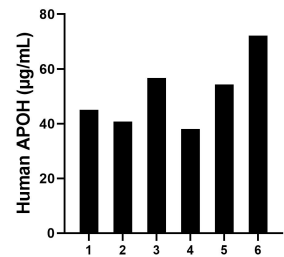
Selected Validation Data



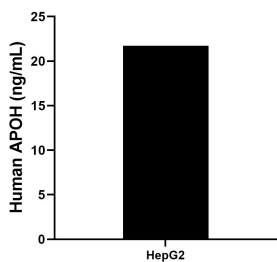
human plasma were subjected to SDS PAGE followed by western blot with 84943-2-RR (APOH antibody) at dilution of 1:10000 incubated at room temperature for 1.5 hours. This data was developed using the same antibody clone with 84943-2-PBS in a different storage buffer formulation.



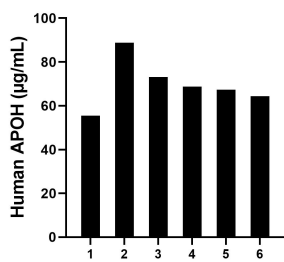
Sandwich ELISA standard curve of MP01667-1, Human APOH Recombinant Matched Antibody Pair - PBS only. 84943-1-PBS was coated to a plate as the capture antibody and incubated with serial dilutions of standard Eg3084. 84943-2-PBS was HRP conjugated as the detection antibody. Range: 39.1-2500 pg/ mL



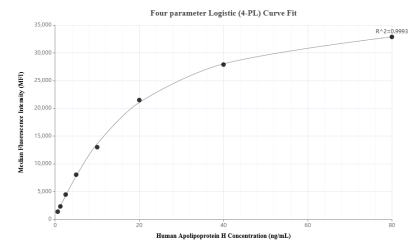
Plasma of six individual healthy human donors was measured. The human APOH concentration of detected samples was determined to be 51.16 µg/mL with a range of 38.03 - 72.18 µg/mL.



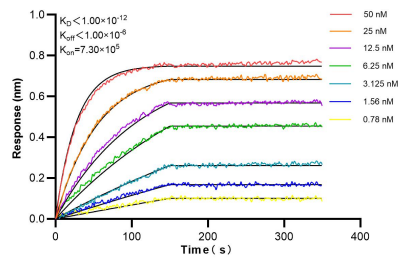
The mean APOH concentration was determined to be 21.74 ng/mL in HepG2 cell extract based on a 1.0 mg/mL extract load.



Serum of six individual healthy human donors was measured. The human APOH concentration of detected samples was determined to be 69.62 µg/mL with a range of 55.50 - 88.74 µg/mL



Cytometric bead array standard curve of MP01667-1, APOH Recombinant Matched Antibody Pair, PBS Only. Capture antibody: 84943-1-PBS. Detection antibody: 84943-2-PBS. Standard: Eg3084. Range: 0.625-80 ng/mL



Biolayer interferometry (BLI) kinetic assays of 84943-2-RR against Human APOH were performed. The affinity constant is below 1 pM.