

For Research Use Only

APOH Recombinant antibody, PBS Only (Capture)

Catalog Number: 84943-1-PBS



Basic Information

Catalog Number:

84943-1-PBS

Size:

1 mg/ml

Source:

Rabbit

Isotype:

IgG

GenBank Accession Number:

NM_000042.2

GeneID (NCBI):

350

UNIPROT ID:

P02749

Full Name:

apolipoprotein H (beta-2-glycoprotein I)

Calculated MW:

38 kDa

Purification Method:

Protein A purification

CloneNo.:

242454B2

Applications

Tested Applications:

Cytometric bead array, Sandwich ELISA, Indirect ELISA, Sample test

Species Specificity:

human

Background Information

Storage

Storage:

Store at -80°C.

The product is shipped with ice packs. Upon receipt, store it immediately at -80°C

Storage Buffer:

PBS Only

For technical support and original validation data for this product please contact:

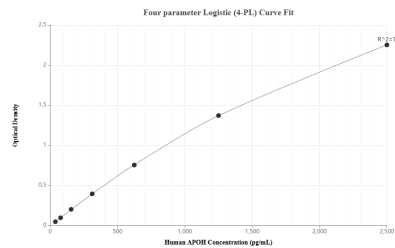
T: 4006900926

E: Proteintech-CN@ptglab.com

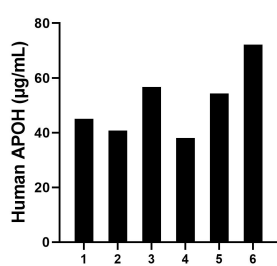
W: ptgcn.com

This product is exclusively available under Proteintech Group brand and is not available to purchase from any other manufacturer.

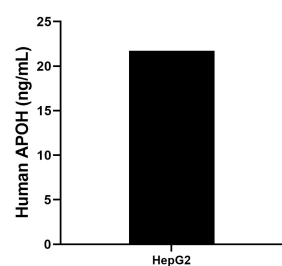
Selected Validation Data



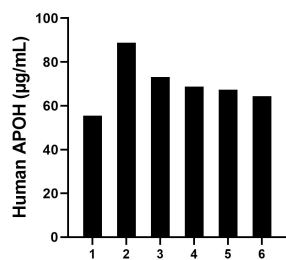
Sandwich ELISA standard curve of MP01667-1, Human APOH Recombinant Matched Antibody Pair - PBS only. 84943-1-PBS was coated to a plate as the capture antibody and incubated with serial dilutions of standard Eg3084. 84943-2-PBS was HRP conjugated as the detection antibody. Range: 39.1-2500 µg/mL



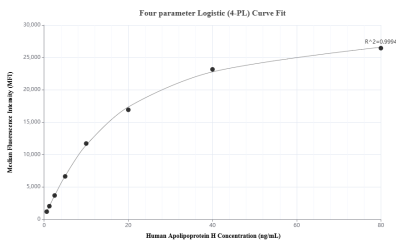
Plasma of six individual healthy human donors was measured. The human APOH concentration of detected samples was determined to be 51.16 µg/mL with a range of 38.03 - 72.18 µg/mL



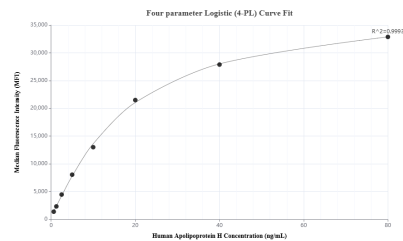
The mean APOH concentration was determined to be 21.74 ng/mL in HepG2 cell extract based on a 1.0 mg/mL extract load.



Serum of six individual healthy human donors was measured. The human APOH concentration of detected samples was determined to be 69.62 µg/mL with a range of 55.50 - 88.74 µg/mL



Cytometric bead array standard curve of MP01667-2, APOH Recombinant Matched Antibody Pair, PBS Only. Capture antibody: 84943-1-PBS. Detection antibody: 84943-3-PBS. Standard: Eg3084. Range: 0.625-80 ng/mL



Cytometric bead array standard curve of MP01667-1, APOH Recombinant Matched Antibody Pair, PBS Only. Capture antibody: 84943-1-PBS. Detection antibody: 84943-2-PBS. Standard: Eg3084. Range: 0.625-80 ng/mL