

PLCG1 Recombinant antibody, PBS Only

Catalog Number: 84941-4-PBS

Basic Information

Catalog Number:	84941-4-PBS	GenBank Accession Number:	Purification Method:
Concentration:	1 mg/ml	GeneID (NCBI):	Protein A purification
Source:	Rabbit	5335	CloneNo.:
Isotype:	IgG	UNIPROT ID:	242529B11
Immunogen Catalog Number:	AG27218	P19174	
		Full Name:	
		phospholipase C, gamma 1	
		Calculated MW:	
		149 kDa	
		Observed MW:	
		149 kDa	

Applications

Tested Applications:
WB, Indirect ELISA

Species Specificity:
human, mouse, rat

Background Information

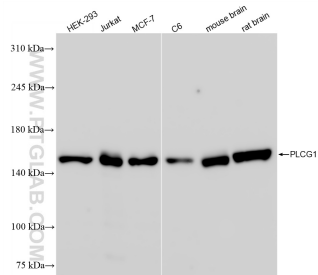
Phosphoinositide phospholipase C-gamma-1 (PLCG1) which belongs to the phosphoinositide-specific phospholipase C (PLC) family, is activated by many extracellular stimuli including hormones, neurotransmitters, and growth factors and modulates several cellular and physiological functions necessary for tumorigenesis such as cell survival, migration, invasion, and angiogenesis by generating inositol 1,4,5-triphosphate (IP3) and diacylglycerol (DAG) via hydrolysis of phosphatidylinositol 4,5-bisphosphate (PIP2) (PMID: 9242915). Phosphorylation is one of the key mechanisms that regulate the activity of PLC. PLC γ is activated by both receptor and non-receptor tyrosine kinases (PMID: 2472218). PLC γ forms a complex with EGF and PDGF receptors, which leads to the phosphorylation of PLC γ at Tyr771, 783, and 1248 (PMID: 1708307). It has also been shown that PKA-mediated phosphorylation at Ser1248 is inhibitory to PLC γ 1 tyrosine phosphorylation and phospholipase activity in CD3-treated Jurkat cells (PMID: 1370476), suggesting that Ser1248 may be an allosteric regulator of PLC γ 1 activity.

Storage

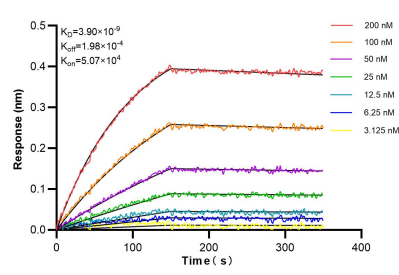
Storage:
Store at -80°C.
The product is shipped with ice packs. Upon receipt, store it immediately at -80°C

Storage Buffer:
PBS Only

Selected Validation Data



Various lysates were subjected to SDS PAGE followed by western blot with 84941-4-RR (PLCG1 antibody) at dilution of 1:10000 incubated at room temperature for 1.5 hours. This data was developed using the same antibody clone with 84941-4-PBS in a different storage buffer formulation.



Biolayer interferometry (BLI) kinetic assays of 84941-4-RR against Human PLCG1 were performed. The affinity constant is 3.90 nM.