

For Research Use Only

# SSBP1 Recombinant antibody, PBS Only (Detector)

Catalog Number: 84939-3-PBS



## Basic Information

Catalog Number: 84939-3-PBS	GenBank Accession Number: BC000895	Purification Method: Protein A purification
Concentration: 1000 ug/ml	GeneID (NCBI): 6742	CloneNo.: 242519C5
Source: Rabbit	UNIPROT ID: Q04837	
Isotype: IgG	Full Name: single-stranded DNA binding protein	
Immunogen Catalog Number: AG2860	1	
	Calculated MW: 148 aa, 17 kDa	
	Observed MW: 17 kDa	

## Applications

**Tested Applications:**  
WB, Cytometric bead array, Indirect ELISA

**Species Specificity:**  
human

## Background Information

SSBP1 is a housekeeping gene involved in mitochondrial biogenesis. It binds preferentially and cooperatively to ss-DNA in the maintenance of genome stability. SSBP1 acted as a homotetramer to stabilize the displaced single strand of the normal and expanded displacement loop (D loop) during mtDNA replication, thus preventing formation of secondary single-stranded DNA structures, which could stop the gamma-DNA polymerase.

## Storage

**Storage:**  
Store at -80°C.

**The product is shipped with ice packs. Upon receipt, store it immediately at -80°C**

**Storage Buffer:**  
PBS Only

For technical support and original validation data for this product please contact:

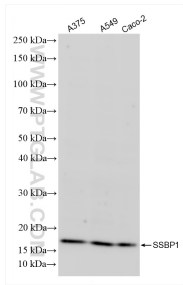
T: 4006900926

E: [Proteintech-CN@ptglab.com](mailto:Proteintech-CN@ptglab.com)

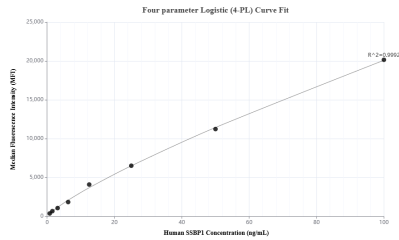
W: [ptgcn.com](http://ptgcn.com)

**This product is exclusively available under Proteintech Group brand and is not available to purchase from any other manufacturer.**

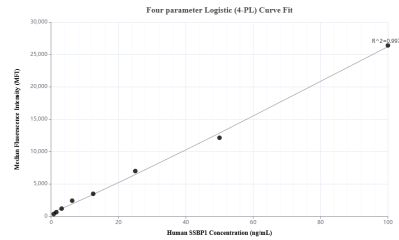
## Selected Validation Data



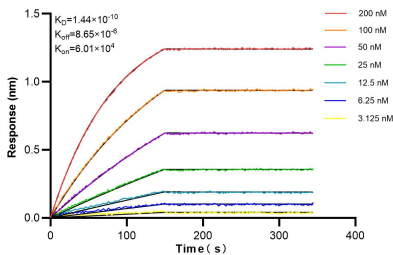
Various lysates were subjected to SDS PAGE followed by western blot with 84939-3-RR (SSBP1 antibody) at dilution of 1:10000 incubated at room temperature for 1.5 hours. This data was developed using the same antibody clone with 84939-3-PBS in a different storage buffer formulation.



Cytometric bead array standard curve of MP01710-1, SSBP1 Recombinant Matched Antibody Pair, PBS Only. Capture antibody: 84939-2-PBS. Detection antibody: 84939-3-PBS. Standard: Ag2860. Range: 0.781-100 ng/mL.



Cytometric bead array standard curve of MP01710-2, SSBP1 Recombinant Matched Antibody Pair, PBS Only. Capture antibody: 84939-1-PBS. Detection antibody: 84939-3-PBS. Standard: Ag2860. Range: 0.781-100 ng/mL.



Biolayer interferometry (BLI) kinetic assays of 84939-3-RR against Human SSBP1 were performed. The affinity constant is 0.144 nM.