

For Research Use Only

ATG12 Recombinant antibody

Catalog Number: 84935-6-RR



Basic Information

Catalog Number:

84935-6-RR

Concentration:

1000 μ g/ml

Source:

Rabbit

Isotype:

IgG

Immunogen Catalog Number:

AG1791

GenBank Accession Number:

BC012266

GeneID (NCBI):

9140

UNIPROT ID:

O94817

Full Name:

ATG12 autophagy related 12 homolog
(S. cerevisiae)

Calculated MW:

15 kDa

Observed MW:

55 kDa

Purification Method:

Protein A purification

CloneNo.:

242483F1

Recommended Dilutions:

WB 1:5000-1:50000

Applications

Tested Applications:

WB, ELISA

Species Specificity:

human

Positive Controls:

WB : HEK-293 cells, HeLa cells, PC-3 cells

Background Information

ATG12, also named as APG12 and APG12L, belongs to the ATG12 family. It is required for autophagy. Free ATG12 is 15kd or 8kd. Conjugated to ATG5, ATG12-ATG5 show 48-55kd.

Storage

Storage:

Store at -20°C. Stable for one year after shipment.

Storage Buffer:

PBS with 0.02% sodium azide and 50% glycerol pH 7.3.

Aliquoting is unnecessary for -20°C storage

For technical support and original validation data for this product please contact:

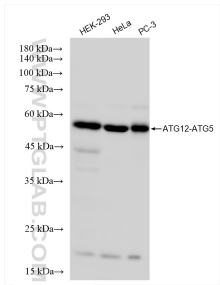
T: 4006900926

E: Proteintech-CN@ptglab.com

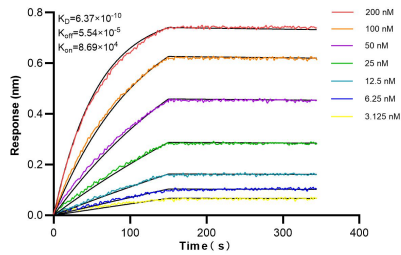
W: ptgcn.com

This product is exclusively available under Proteintech Group brand and is not available to purchase from any other manufacturer.

Selected Validation Data



Various lysates were subjected to SDS PAGE followed by western blot with 84935-6-RR (ATG12 antibody) at dilution of 1:10000 incubated at room temperature for 1.5 hours.



Biolayer interferometry (BLI) kinetic assays of 84935-6-RR against Human ATG12 were performed. The affinity constant is 0.637 nM.