

For Research Use Only

ATG12 Recombinant antibody, PBS Only (Detector)

Catalog Number: 84935-2-PBS



Basic Information

Catalog Number:

84935-2-PBS

Concentration:

1 mg/ml

Source:

Rabbit

Isotype:

IgG

Immunogen Catalog Number:

AG1791

GenBank Accession Number:

BC012266

GeneID (NCBI):

9140

UNIPROT ID:

O94817

Full Name:

ATG12 autophagy related 12 homolog
(S. cerevisiae)

Calculated MW:

15 kDa

Purification Method:

Protein A purification

CloneNo.:

242483D7

Applications

Tested Applications:

Cytometric bead array, Sandwich ELISA, Indirect ELISA,
Sample test

Species Specificity:

human

Background Information

Storage

Storage:

Store at -80°C.

The product is shipped with ice packs. Upon receipt, store it immediately at -80°C

Storage Buffer:

PBS Only

For technical support and original validation data for this product please contact:

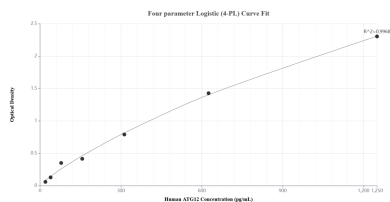
T: 4006900926

E: Proteintech-CN@ptglab.com

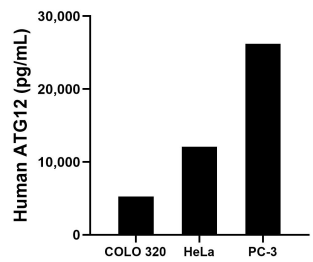
W: ptgcn.com

This product is exclusively available under Proteintech Group brand and is not available to purchase from any other manufacturer.

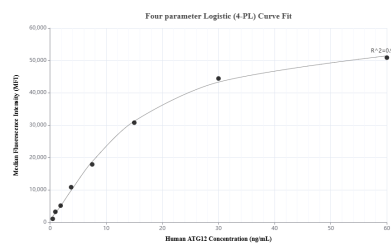
Selected Validation Data



Sandwich ELISA standard curve of MP01715-3, Human ATG12 Recombinant Matched Antibody Pair - PBS only. 84935-1-PBS was coated to a plate as the capture antibody and incubated with serial dilutions of standard Ag1791. 84935-2-PBS was HRP conjugated as the detection antibody. Range: 19.5-1250 pg/mL



The mean ATG12 concentration was determined to be 5,245.1 pg/mL in COLO 320 cell extract based on a 2.0 mg/mL extract load, 12,068.3 pg/mL in HeLa cell extract based on a 1.3 mg/mL extract load and 26,207.3 pg/mL in PC-3 cell extract based on a 2.5 mg/mL extract load.



Cytometric bead array standard curve of MP01715-2, ATG12 Recombinant Matched Antibody Pair, PBS Only. Capture antibody: 84935-4-PBS. Detection antibody: 84935-2-PBS. Standard: Ag1791. Range: 0.469-60 ng/mL