

For Research Use Only

# BCL11A Recombinant antibody, PBS Only (Detector)

Catalog Number: 84930-4-PBS



## Basic Information

Catalog Number:

84930-4-PBS

Concentration:

1 mg/ml

Source:

Rabbit

Isotype:

IgG

Immunogen Catalog Number:

AG2187

GenBank Accession Number:

BC021098

GeneID (NCBI):

53335

UNIPROT ID:

Q9H165

Full Name:

B-cell CLL/lymphoma 11A (zinc finger protein)

Calculated MW:

835 aa, 91 kDa

Purification Method:

Protein A purification

CloneNo.:

242481G10

## Applications

Tested Applications:

Cytometric bead array, Sandwich ELISA, Indirect ELISA, Sample test

Species Specificity:

human

## Background Information

### Storage

Storage:

Store at -80°C.

The product is shipped with ice packs. Upon receipt, store it immediately at -80°C

Storage Buffer:

PBS Only

For technical support and original validation data for this product please contact:

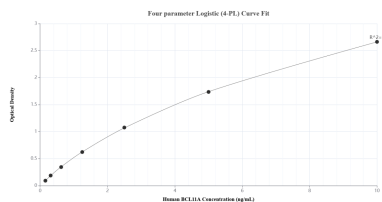
T: 4006900926

E: [Proteintech-CN@ptglab.com](mailto:Proteintech-CN@ptglab.com)

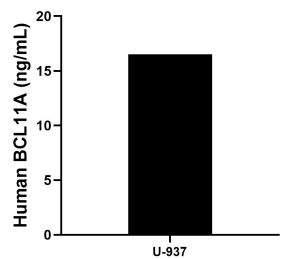
W: [ptgcn.com](http://ptgcn.com)

This product is exclusively available under Proteintech Group brand and is not available to purchase from any other manufacturer.

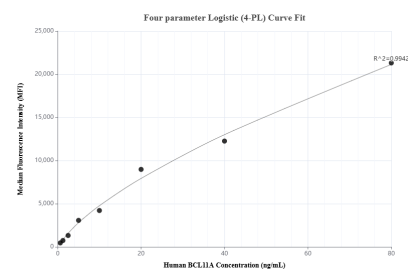
## Selected Validation Data



Sandwich ELISA standard curve of MP01680-2, Human BCL11A Recombinant Matched Antibody Pair - PBS only. 84930-3-PBS was coated to a plate as the capture antibody and incubated with serial dilutions of standard Ag2187. 84930-4-PBS was HRP conjugated as the detection antibody. Range: 0.156-10 ng/mL



The mean BCL11A concentration was determined to be 16.52 ng/mL in U-937 cell extract based on a 2.20 mg/mL extract load.



Cytometric bead array standard curve of MP01680-2, BCL11A Recombinant Matched Antibody Pair, PBS Only. Capture antibody: 84930-3-PBS. Detection antibody: 84930-4-PBS. Standard: Ag2187. Range: 0.625-80 ng/mL