

For Research Use Only

BCL11A Recombinant antibody, PBS Only (Capture)

Catalog Number: 84930-3-PBS



Basic Information

Catalog Number:

84930-3-PBS

Concentration:

1 mg/ml

Source:

Rabbit

Isotype:

IgG

Immunogen Catalog Number:

AG2187

GenBank Accession Number:

BC021098

GeneID (NCBI):

53335

UNIPROT ID:

Q9H165

Full Name:

B-cell CLL/lymphoma 11A (zinc finger protein)

Calculated MW:

835 aa, 91 kDa

Observed MW:

110-120 kDa

Purification Method:

Protein A purification

CloneNo.:

242481F2

Applications

Tested Applications:

WB, Cytometric bead array, Sandwich ELISA, Indirect ELISA, Sample test

Species Specificity:

human

Background Information

Storage

Storage:

Store at -80°C.

The product is shipped with ice packs. Upon receipt, store it immediately at -80°C

Storage Buffer:

PBS Only

For technical support and original validation data for this product please contact:

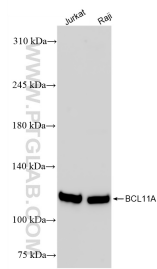
T: 4006900926

E: Proteintech-CN@ptglab.com

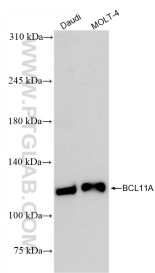
W: ptgcn.com

This product is exclusively available under Proteintech Group brand and is not available to purchase from any other manufacturer.

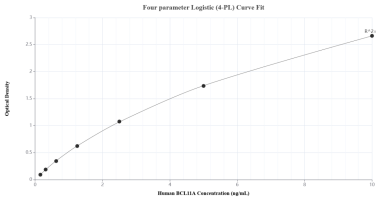
Selected Validation Data



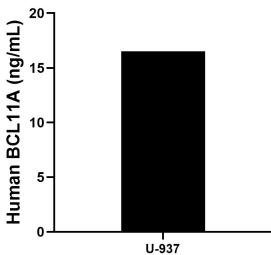
Various lysates were subjected to SDS PAGE followed by western blot with 84930-3-RR (BCL11A antibody) at dilution of 1:10000 incubated at room temperature for 1.5 hours. This data was developed using the same antibody clone with 84930-3-PBS in a different storage buffer formulation.



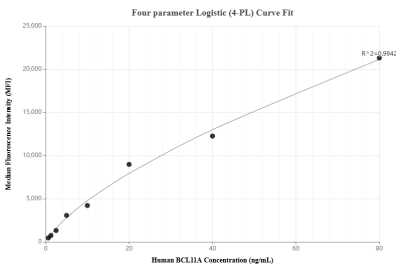
Various lysates were subjected to SDS PAGE followed by western blot with 84930-3-RR (BCL11A antibody) at dilution of 1:10000 incubated at room temperature for 1.5 hours. This data was developed using the same antibody clone with 84930-3-PBS in a different storage buffer formulation.



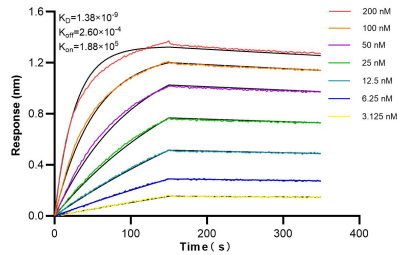
Sandwich ELISA standard curve of MP01680-2, Human BCL11A Recombinant Matched Antibody Pair - PBS only. 84930-3-PBS was coated to a plate as the capture antibody and incubated with serial dilutions of standard Ag2187. 84930-4-PBS was HRP conjugated as the detection antibody. Range: 0.156-10 ng/mL



The mean BCL11A concentration was determined to be 16.52 ng/mL in U-937 cell extract based on a 2.20 mg/mL extract load.



Cytometric bead array standard curve of MP01680-2, BCL11A Recombinant Matched Antibody Pair, PBS Only. Capture antibody: 84930-3-PBS. Detection antibody: 84930-4-PBS. Standard: Ag2187. Range: 0.625-80 ng/mL.



Bi-layer interferometry (BLI) kinetic assays of 84930-3-RR against Human BCL11A were performed. The affinity constant is 1.38 nM.