

For Research Use Only

PSMD3 Recombinant antibody, PBS Only (Capture)

Catalog Number: 84928-2-PBS



Basic Information

Catalog Number:	84928-2-PBS	GenBank Accession Number:	BC012302	Purification Method:	Protein A purification
Concentration:	1 mg/ml	GeneID (NCBI):	5709	CloneNo.:	242470D4
Source:	Rabbit	UNIPROT ID:	O43242		
Isotype:	IgG	Full Name:	proteasome (prosome, macropain)		
Immunogen Catalog Number:	AG2684		26S subunit, non-ATPase, 3		
		Calculated MW:	534 aa, 61 kDa		
		Observed MW:	61 kDa		

Applications

Tested Applications:
WB, IHC, FC (Intra), Cytometric bead array, Indirect ELISA

Species Specificity:
human

Background Information

PSMD3, encoding proteasome (prosome, macropain) 26S subunit, non-ATPase 3, a member of the 26S proteasome family. PSMD3 is expressed in most of the tissues according to the RNA-Seq database. It has been reported that PSMD3 genotypes are associated with white blood cell (WBC) and neutrophil counts and have interactions with dietary fatty acids and carbohydrates on glucose-related traits. PSMD3 is located at ch17q21 and encodes a protein with a molecular weight of 61 kDa (PMID: 31013812).

Storage

Storage:
Store at -80°C.
The product is shipped with ice packs. Upon receipt, store it immediately at -80°C

Storage Buffer:
PBS Only

For technical support and original validation data for this product please contact:

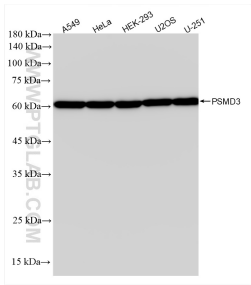
T: 4006900926

E: Proteintech-CN@ptglab.com

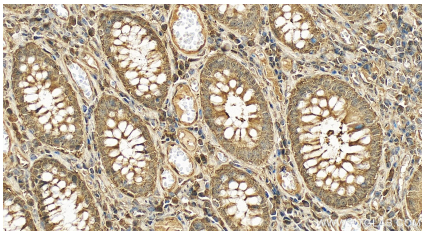
W: ptgcn.com

This product is exclusively available under Proteintech Group brand and is not available to purchase from any other manufacturer.

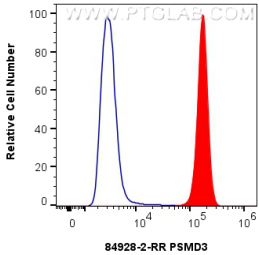
Selected Validation Data



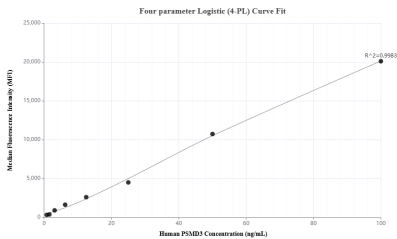
Various lysates were subjected to SDS PAGE followed by western blot with 84928-2-RR (PSMD3 antibody) at dilution of 1:10000 incubated at room temperature for 1.5 hours. This data was developed using the same antibody clone with 84928-2-PBS in a different storage buffer formulation.



Immunohistochemical analysis of paraffin-embedded human colon cancer tissue slide using 84928-2-RR (PSMD3 antibody) at dilution of 1:1000 (under 40x lens). Heat mediated antigen retrieval with Tris-EDTA buffer (pH 9.0). This data was developed using the same antibody clone with 84928-2-PBS in a different storage buffer formulation.



1x10⁶ A549 cells were intracellularly stained with 0.25 ug PSMD3 Recombinant antibody (84928-2-RR, Clone:242470D4) and CoraLite®488-Conjugated Goat Anti-Rabbit IgG(H+L) (SA00013-2)(red), or 0.25 ug Rabbit IgG Isotype Control Recombinant Antibody (98136-1-RR, Clone: 240953C9) (blue). Cells were fixed with 4% PFA and permeabilized with Flow Cytometry Perm Buffer (PF00011-C). This data was developed using the same antibody clone with 84928-2-PBS in a



Cytometric bead array standard curve of MP01691-2, PSMD3 Recombinant Matched Antibody Pair, PBS Only. Capture antibody: 84928-2-PBS. Detection antibody: 84928-1-PBS. Standard: Ag2684. Range: 0.781-100 ng/mL