

For Research Use Only

Mouse CD25/IL-2RA Recombinant antibody, PBS Only (Capture/Detector)

Catalog Number: 84925-1-PBS



Basic Information

Catalog Number:

84925-1-PBS

Size:

1 mg/ml

Source:

Rabbit

Isotype:

IgG

GenBank Accession Number:

NM_008367.3

GeneID (NCBI):

16184

UNIPROT ID:

P01590

Full Name:

interleukin 2 receptor, alpha chain

Calculated MW:

31 kDa

Purification Method:

Protein A purification

CloneNo.:

242494A6

Applications

Tested Applications:

Cytometric bead array, Sandwich ELISA, Indirect ELISA, Sample test

Species Specificity:

mouse

Background Information

Storage

Storage:

Store at -80°C.

The product is shipped with ice packs. Upon receipt, store it immediately at -80°C

Storage Buffer:

PBS Only

For technical support and original validation data for this product please contact:

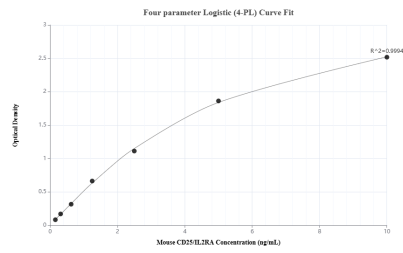
T: 4006900926

E: Proteintech-CN@ptglab.com

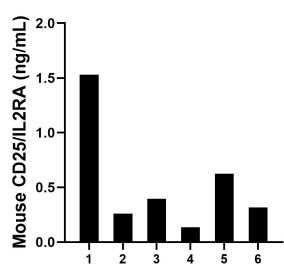
W: ptgcn.com

This product is exclusively available under Proteintech Group brand and is not available to purchase from any other manufacturer.

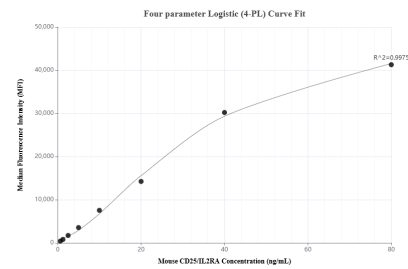
Selected Validation Data



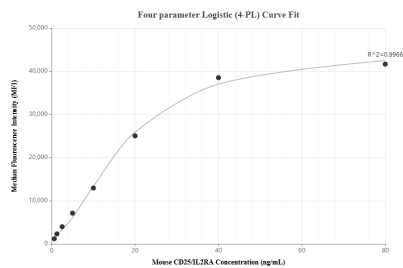
Sandwich ELISA standard curve of MP01669-3, Mouse CD25/IL2RA Recombinant Matched Antibody Pair - PBS only. 84925-3-PBS was coated to a plate as the capture antibody and incubated with serial dilutions of standard Eg3087. 84925-1-PBS was HRP conjugated as the detection antibody. Range: 0.156-10 ng/mL



Serum of six mice was measured. The mouse CD25/IL2RA concentration of detected samples was determined to be 0.54 ng/mL with a range of 0.14 - 1.53 ng/mL.



Cytometric bead array standard curve of MP01669-2, MOUSE CD25/IL2RA Recombinant Matched Antibody Pair, PBS Only. Capture antibody: 84925-1-PBS. Detection antibody: 84925-2-PBS. Standard: Eg3087. Range: 0.625-80 ng/mL



Cytometric bead array standard curve of MP01669-1, MOUSE CD25/IL2RA Recombinant Matched Antibody Pair, PBS Only. Capture antibody: 84925-3-PBS. Detection antibody: 84925-1-PBS. Standard: Eg3087. Range: 0.625-80 ng/mL