

For Research Use Only

CNDP2 Recombinant antibody, PBS Only

Catalog Number: 84924-7-PBS



Basic Information

Catalog Number:

84924-7-PBS

Concentration:

1 mg/ml

Source:

Rabbit

Isotype:

IgG

Immunogen Catalog Number:

AG6684

GenBank Accession Number:

BC001375

GeneID (NCBI):

55748

UNIPROT ID:

Q96KP4

Full Name:

CNDP dipeptidase 2
(metallopeptidase M20 family)

Calculated MW:

53 kDa

Observed MW:

44-53 kDa

Purification Method:

Protein A purification

CloneNo.:

242373E4

Applications

Tested Applications:

WB, IHC, Indirect ELISA

Species Specificity:

human, mouse, rat

Background Information

Carnosine dipeptidase II (CNDP2) catalyzes the peptide bond hydrolysis in dipeptides, displaying a non-redundant activity toward threonyl dipeptides. It has high dipeptidase activity toward cysteinyl glycine, an intermediate metabolite in glutathione metabolism (PubMed:19346245, PubMed:12473676). Metabolizes N-lactoyl-amino acids, both through hydrolysis to form lactic acid and amino acids, as well as through their formation by reverse proteolysis (PubMed:25964343). CNDP2 has 2 isoforms with a molecular weight of 53 and 44 kDa. The isoform 1 is ubiquitously expressed with higher levels in the kidney and liver (at protein level) and expressed in peripheral blood leukocytes (PubMed:12473676). It is also expressed in gastric mucosa and down-regulated in gastric cancer mucosal tissues (at the protein level) (PubMed:24395568). Isoform 2 is broadly expressed in fetal tissues and expressed in the adult liver and placenta. (PMID: 17121880).

Storage

Storage:

Store at -80°C.

The product is shipped with ice packs. Upon receipt, store it immediately at -80°C

Storage Buffer:

PBS only, pH7.3

For technical support and original validation data for this product please contact:

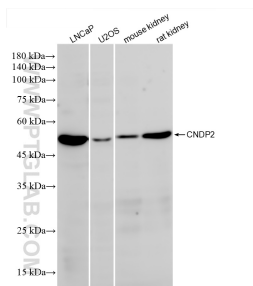
T: 4006900926

E: Proteintech-CN@ptglab.com

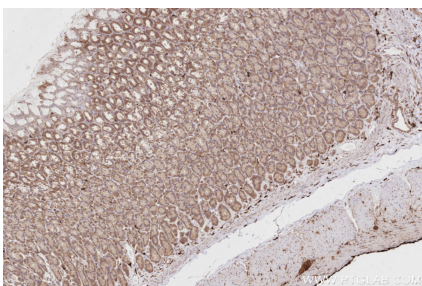
W: ptgcn.com

This product is exclusively available under Proteintech Group brand and is not available to purchase from any other manufacturer.

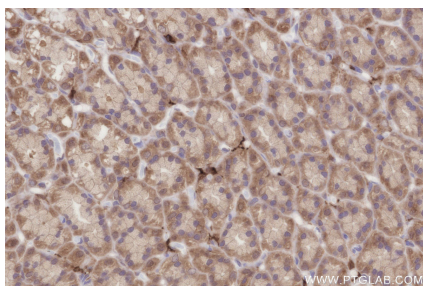
Selected Validation Data



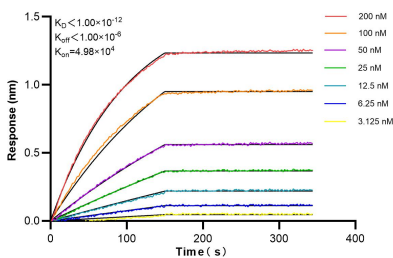
Various lysates were subjected to SDS PAGE followed by western blot with 84924-7-RR (CNDP2 antibody) at dilution of 1:5000 incubated at room temperature for 1.5 hours. This data was developed using the same antibody clone with 84924-7-PBS in a different storage buffer formulation.



Immunohistochemical analysis of paraffin-embedded rat stomach tissue slide using 84924-7-RR (CNDP2 antibody) at dilution of 1:2000 (under 10x lens). Heat mediated antigen retrieval with Tris-EDTA buffer (pH 9.0). This data was developed using the same antibody clone with 84924-7-PBS in a different storage buffer formulation.



Immunohistochemical analysis of paraffin-embedded rat stomach tissue slide using 84924-7-RR (CNDP2 antibody) at dilution of 1:2000 (under 40x lens). Heat mediated antigen retrieval with Tris-EDTA buffer (pH 9.0). This data was developed using the same antibody clone with 84924-7-PBS in a different storage buffer formulation.



Biolayer interferometry (BLI) kinetic assays of 84924-7-RR against Human CNDP2 were performed. The affinity constant is below 1 pM.