

For Research Use Only

JUNB Recombinant antibody, PBS Only (Detector)

Catalog Number: 84922-4-PBS



Basic Information

Catalog Number:	GenBank Accession Number:	Purification Method:
84922-4-PBS	BC004250	Protein A purification
Concentration:	GeneID (NCBI):	CloneNo.:
1 mg/ml	3726	242562E9
Source:	UNIPROT ID:	
Rabbit	P17275	
Isotype:	Full Name:	
IgG	jun B proto-oncogene	
Immunogen Catalog Number:	Calculated MW:	
AG0752	36 kDa	

Applications

Tested Applications:
Sandwich ELISA, Indirect ELISA, Sample test

Species Specificity:
human

Background Information

Storage

Storage:
Store at -80°C.
The product is shipped with ice packs. Upon receipt, store it immediately at -80°C

Storage Buffer:
PBS Only

For technical support and original validation data for this product please contact:

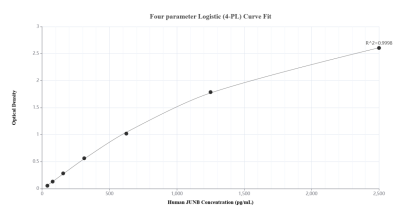
T: 4006900926

E: Proteintech-CN@ptglab.com

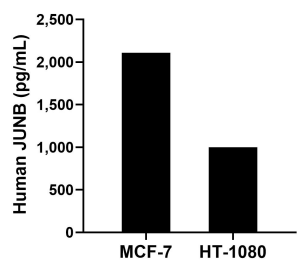
W: ptgcn.com

This product is exclusively available under Proteintech Group brand and is not available to purchase from any other manufacturer.

Selected Validation Data



Sandwich ELISA standard curve of MP01695-3, Human JUNB Recombinant Matched Antibody Pair - PBS only. 84922-3-PBS was coated to a plate as the capture antibody and incubated with serial dilutions of standard Ag0752. 84922-4-PBS was HRP conjugated as the detection antibody. Range: 39.1-2500 pg/mL.



The mean JUNB concentration was determined to be 2,110.1 pg/mL in MCF-7 cell extract based on a 1.2 mg/mL extract load and 998.0 ng/mL in HT-1080 cell extract based on a 1.4 mg/mL Extract load.