

For Research Use Only

# EPB42 Recombinant antibody, PBS Only (Detector)

Catalog Number: 84921-3-PBS



## Basic Information

<b>Catalog Number:</b> 84921-3-PBS	<b>GenBank Accession Number:</b> BC096093	<b>Purification Method:</b> Protein A purification
<b>Concentration:</b> 1 mg/ml	<b>GeneID (NCBI):</b> 2038	<b>CloneNo.:</b> 242412F4
<b>Source:</b> Rabbit	<b>UNIPROT ID:</b> P16452	
<b>Isotype:</b> IgG	<b>Full Name:</b> erythrocyte membrane protein band 4.2	
<b>Immunogen Catalog Number:</b> AG23556	<b>Observed MW:</b> 77 kDa	

## Applications

**Tested Applications:**  
WB, IHC, IF/ICC, Cytometric bead array, Indirect ELISA

**Species Specificity:**  
human

## Background Information

EPB42, also known as Protein 4.2, is amongst the most abundant protein components of the erythrocyte membrane, representing approximately 5% membrane content or  $\sim 2.5 \times 10^5$  copies/cell. EPB42 binds to the cytoplasmic domain of band 3, which serves as a site for the anchorage of several membrane skeletal proteins (PMID: 19269200, 12049649). EPB42 is a 72 kDa peripheral membrane protein.

## Storage

**Storage:**  
Store at  $-80^{\circ}\text{C}$ .  
**The product is shipped with ice packs. Upon receipt, store it immediately at  $-80^{\circ}\text{C}$**

**Storage Buffer:**  
PBS only

For technical support and original validation data for this product please contact:

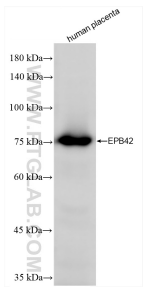
T: 4006900926

E: Proteintech-CN@ptglab.com

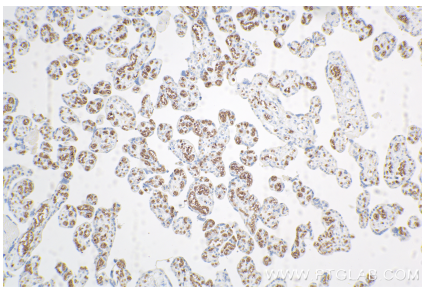
W: ptgcn.com

**This product is exclusively available under Proteintech Group brand and is not available to purchase from any other manufacturer.**

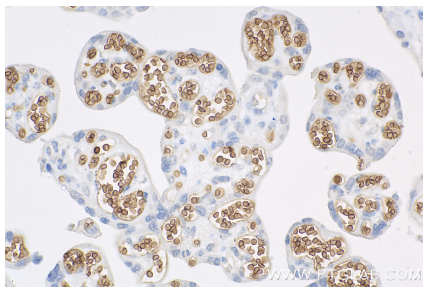
Selected Validation Data



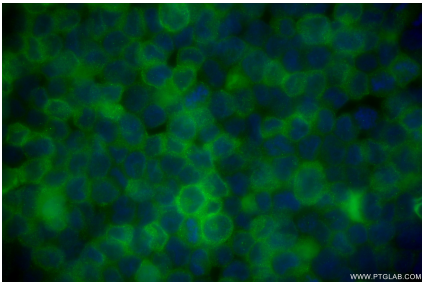
human placenta tissue were subjected to SDS PAGE followed by western blot with 84921-3-RR (EPB42 antibody) at dilution of 1:2000 incubated at room temperature for 1.5 hours. This data was developed using the same antibody clone with 84921-3-PBS in a different storage buffer formulation.



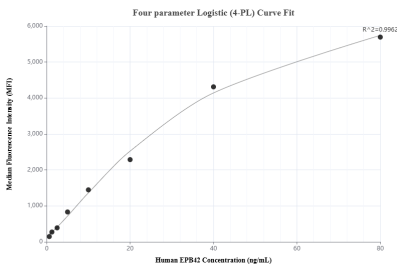
Immunohistochemical analysis of paraffin-embedded human placenta tissue slide using 84921-3-RR (EPB42 antibody) at dilution of 1:400 (under 10x lens). Heat mediated antigen retrieval with Tris-EDTA buffer (pH 9.0). This data was developed using the same antibody clone with 84921-3-PBS in a different storage buffer formulation.



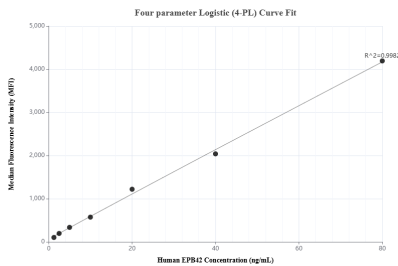
Immunohistochemical analysis of paraffin-embedded human placenta tissue slide using 84921-3-RR (EPB42 antibody) at dilution of 1:400 (under 40x lens). Heat mediated antigen retrieval with Tris-EDTA buffer (pH 9.0). This data was developed using the same antibody clone with 84921-3-PBS in a different storage buffer formulation.



Immunofluorescent analysis of (4% PFA) fixed HEL cells using EPB42 antibody (84921-3-RR, Clone: 242412F4) at dilution of 1:400 and CoraLite® 488-Conjugated Goat Anti-Rabbit IgG(H+L) (SA00013-2). This data was developed using the same antibody clone with 84921-3-PBS in a different storage buffer formulation.



Cytometric bead array standard curve of MP01708-1, EPB42 Recombinant Matched Antibody Pair, PBS Only. Capture antibody: 84921-2-PBS. Detection antibody: 84921-3-PBS. Standard: Ag23556. Range: 0.625-80 ng/mL.



Cytometric bead array standard curve of MP01708-2, EPB42 Recombinant Matched Antibody Pair, PBS Only. Capture antibody: 84921-1-PBS. Detection antibody: 84921-3-PBS. Standard: Ag23556. Range: 1.25-80 ng/mL.