

For Research Use Only

HECTD1 Recombinant antibody, PBS Only

Catalog Number: 84918-5-PBS



Basic Information

Catalog Number:

84918-5-PBS

Concentration:

1 mg/ml

Source:

Rabbit

Isotype:

IgG

Immunogen Catalog Number:

AG14581

GenBank Accession Number:

BC006237

GeneID (NCBI):

25831

UNIPROT ID:

Q9ULT8

Full Name:

HECT domain containing 1

Calculated MW:

2612 aa, 290 kDa

Observed MW:

290 kDa

Purification Method:

Protein A purification

CloneNo.:

242344A2

Applications

Tested Applications:

WB, Indirect ELISA

Species Specificity:

human

Background Information

HECTD1 (E3 ubiquitin-protein ligase), which accepts ubiquitin from an E2 ubiquitin-conjugating enzyme in the form of a thioester and then directly transfers the ubiquitin to targeted substrates, may be required for development of the head mesenchyme and neural tube closure. It is also involved in sporadic Parkinson's disease (PMID:16714300). This antibody is specific to HECTD1.

Storage

Storage:

Store at -80°C.

The product is shipped with ice packs. Upon receipt, store it immediately at -80°C

Storage Buffer:

PBS Only

For technical support and original validation data for this product please contact:

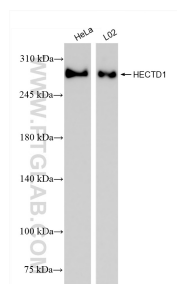
T: 4006900926

E: Proteintech-CN@ptglab.com

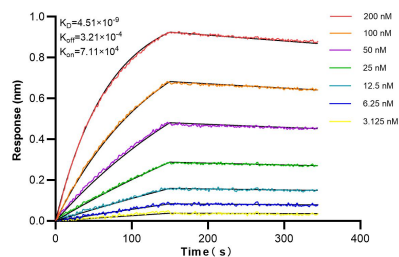
W: ptgcn.com

This product is exclusively available under Proteintech Group brand and is not available to purchase from any other manufacturer.

Selected Validation Data



Various lysates were subjected to SDS PAGE followed by western blot with 84918-5-RR (HECTD1 antibody) at dilution of 1:10000 incubated at room temperature for 1.5 hours. This data was developed using the same antibody clone with 84918-5-PBS in a different storage buffer formulation.



Biolayer interferometry (BLI) kinetic assays of 84918-5-RR against Human HECTD1 were performed. The affinity constant is 4.51 nM.