

For Research Use Only

# GPR56 Recombinant antibody, PBS Only (Capture)

Catalog Number: 84915-1-PBS



## Basic Information

Catalog Number:

84915-1-PBS

Size:

1 mg/ml

Source:

Rabbit

Isotype:

IgG

GenBank Accession Number:

NM\_001145771.2

GeneID (NCBI):

9289

UNIPROT ID:

Q9Y653

Full Name:

G protein-coupled receptor 56

Calculated MW:

78 kDa

Observed MW:

65 kDa

Purification Method:

Protein A purification

CloneNo.:

242249A7

## Applications

Tested Applications:

WB, Cytometric bead array, Sandwich ELISA, Indirect ELISA, Sample test

Species Specificity:

human

## Background Information

GPR56 (G-protein-coupled receptor 56, also named ADGRG1) is a member of the adhesion G-protein coupled receptor (aGPCR) family and one of the important players in the normal development of the brain. It plays a pivotal role in diverse neurobiological processes, including cortical formation, oligodendrocyte development, and myelination (PMID: 32798453). Moreover, GPR56 has been reported to regulate VEGF secretion and angiogenesis in melanoma (PMID: 37579299).

## Storage

Storage:

Store at -80°C.

**The product is shipped with ice packs. Upon receipt, store it immediately at -80°C**

Storage Buffer:

PBS Only

For technical support and original validation data for this product please contact:

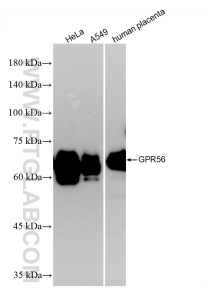
T: 4006900926

E: [Proteintech-CN@ptglab.com](mailto:Proteintech-CN@ptglab.com)

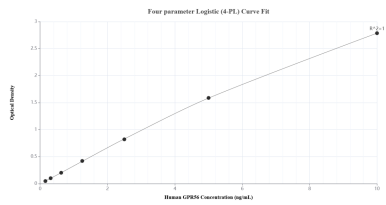
W: [ptgcn.com](http://ptgcn.com)

**This product is exclusively available under Proteintech Group brand and is not available to purchase from any other manufacturer.**

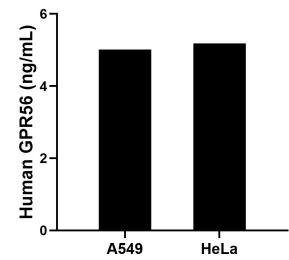
Selected Validation Data



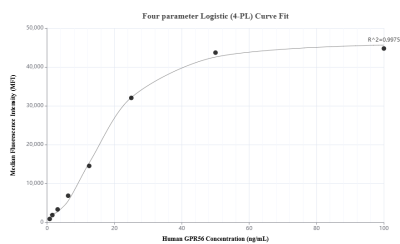
HeLa cells were subjected to SDS PAGE followed by western blot with 84915-1-RR (GPR56 antibody) at dilution of 1:5000 incubated at room temperature for 1.5 hours. This data was developed using the same antibody clone with 84915-1-PBS in a different storage buffer formulation.



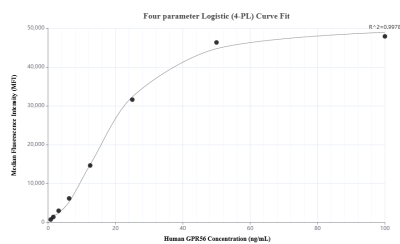
Sandwich ELISA standard curve of MP01673-1, Human GPR56 Recombinant Matched Antibody Pair - PBS only. 84915-1-PBS was coated to a plate as the capture antibody and incubated with serial dilutions of standard Eg2478. 84915-2-PBS was HRP conjugated as the detection antibody. Range: 0.156-10 ng/mL



The mean GPR56 concentration was determined to be 5.01 ng/mL in A549 cell extract based on a 1.50 mg/mL extract load and 5.18 ng/mL in HeLa cell extract based on a 1.00 mg/mL extract load.



Cytometric bead array standard curve of MP01673-2, GPR56 Recombinant Matched Antibody Pair, PBS Only. Capture antibody: 84915-1-PBS. Detection antibody: 84915-3-PBS. Standard: Eg2478. Range: 0.781-50 ng/mL



Cytometric bead array standard curve of MP01673-1, GPR56 Recombinant Matched Antibody Pair, PBS Only. Capture antibody: 84915-1-PBS. Detection antibody: 84915-2-PBS. Standard: Eg2478. Range: 0.781-50 ng/mL