

For Research Use Only

Mono/Di/Tri-Methyl-Histone H3 (Lys4) Recombinant antibody

Catalog Number: 84908-1-RR



Basic Information

Catalog Number:

84908-1-RR

Size:

1000 µg/ml

Source:

Rabbit

Isotype:

IgG

GenBank Accession Number:

BC066245

GeneID (NCBI):

8350

UNIPROT ID:

P68431

Full Name:

histone cluster 1, H3a

Observed MW:

15 kDa

Purification Method:

Protein A purification

CloneNo.:

241942E11

Recommended Dilutions:

WB 1:5000-1:50000

IHC 1:500-1:2000

Applications

Tested Applications:

WB, IHC, Dot Blot, ELISA

Species Specificity:

human, mouse, rat

**Note-IHC: suggested antigen retrieval with
TE buffer pH 9.0; (*) Alternatively, antigen
retrieval may be performed with citrate
buffer pH 6.0**

Positive Controls:

WB : HeLa cells, HepG2 cells, HEK-293 cells, A549 cells,
K-562 cells, NIH/3T3 cells, HSC-T6 cells

IHC : mouse testis tissue, mouse liver tissue, human
placenta tissue

Background Information

Storage

Storage:

Store at -20°C. Stable for one year after shipment.

Storage Buffer:

PBS with 0.02% sodium azide and 50% glycerol pH 7.3.

Aliquoting is unnecessary for -20°C storage

For technical support and original validation data for this product please contact:

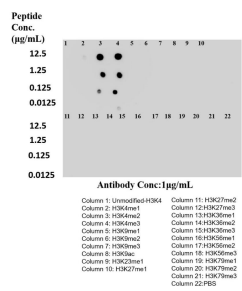
T: 4006900926

E: Proteintech-CN@ptglab.com

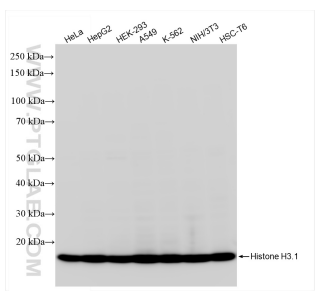
W: ptgcn.com

**This product is exclusively available under Proteintech
Group brand and is not available to purchase from any
other manufacturer.**

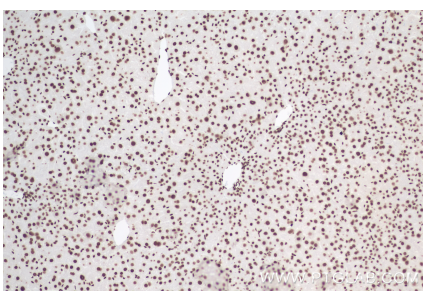
Selected Validation Data



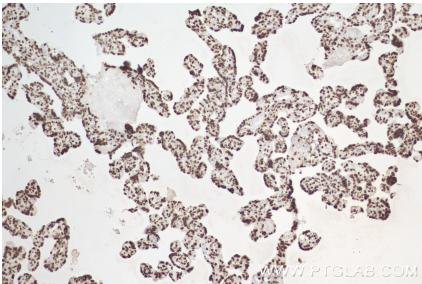
Dot blot analysis was used to confirm the specificity of 84908-1-RR Mono/Di/Tri-Methyl-Histone H3 (Lys4) antibody. Peptides were spotted onto NC and probed with antibody at 1 µg/mL. The amount of peptide (µg/mL) spotted is indicated next to each row.



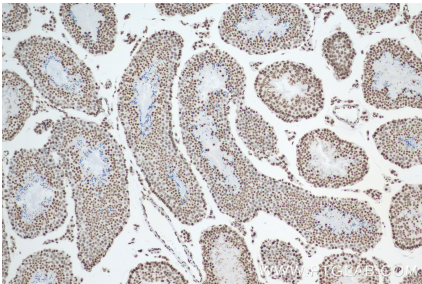
Various lysates were subjected to SDS PAGE followed by western blot with 84908-1-RR (Mono/Di/Tri-Methyl-Histone H3 (Lys4) antibody) at dilution of 1:10000 incubated at room temperature for 1.5 hours.



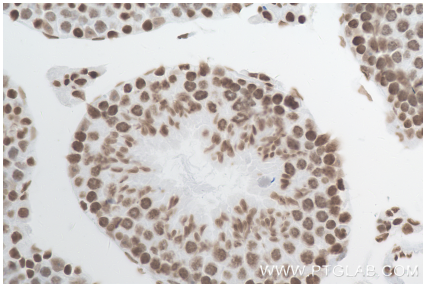
Immunohistochemical analysis of paraffin-embedded mouse liver tissue slide using 84908-1-RR (Mono/Di/Tri-Methyl-Histone H3 (Lys4) antibody) at dilution of 1:1000 (under 10x lens). Heat mediated antigen retrieval with Tris-EDTA buffer (pH 9.0).



Immunohistochemical analysis of paraffin-embedded human placenta tissue slide using 84908-1-RR (Mono/Di/Tri-Methyl-Histone H3 (Lys4) antibody) at dilution of 1:1000 (under 10x lens). Heat mediated antigen retrieval with Tris-EDTA buffer (pH 9.0).



Immunohistochemical analysis of paraffin-embedded mouse testis tissue slide using 84908-1-RR (Mono/Di/Tri-Methyl-Histone H3 (Lys4) antibody) at dilution of 1:1000 (under 10x lens). Heat mediated antigen retrieval with Tris-EDTA buffer (pH 9.0).



Immunohistochemical analysis of paraffin-embedded mouse testis tissue slide using 84908-1-RR (Mono/Di/Tri-Methyl-Histone H3 (Lys4) antibody) at dilution of 1:1000 (under 40x lens). Heat mediated antigen retrieval with Tris-EDTA buffer (pH 9.0).