

For Research Use Only

# RPL15 Recombinant antibody

Catalog Number: 84900-1-RR



## Basic Information

Catalog Number:

84900-1-RR

Size:

1000  $\mu$ g/ml

Source:

Rabbit

Isotype:

IgG

Immunogen Catalog Number:

AG9948

GenBank Accession Number:

BC070328

GeneID (NCBI):

6138

UNIPROT ID:

P61313

Full Name:

ribosomal protein L15

Calculated MW:

204 aa, 24 kDa

Observed MW:

27 kDa

Purification Method:

Protein A purification

CloneNo.:

242029E3

Recommended Dilutions:

WB 1:5000-1:50000

## Applications

Tested Applications:

WB, ELISA

Species Specificity:

human, mouse, rat

Positive Controls:

WB : HeLa cells, HepG2 cells, K-562 cells, COLO 320 cells, NCI-H1299 cells, mouse colon tissue, rat colon tissue

## Background Information

RPL15 (ribosomal protein L15) is a component of the ribosomal large subunit 60S, participating in the assembly process of ribosomal subunits and involved in the processing of rRNA. Moreover, RPL15 deletion will lead to abnormalities in the biogenesis of ribosomal subunits. The abnormal expression or mutation of RPL15 protein is also closely related to the occurrence and development of many diseases. RPL15 was highly expressed in gastric cancer cell lines, and interference with the expression of RPL15 could inhibit gastric cancer cell growth. In addition, RPL15 in skin squamous cell carcinoma tissues and pancreatic cancer cell lines decreased sharply, which had a great relationship with the survival rate. PMID:35410346

## Storage

Storage:

Store at -20°C. Stable for one year after shipment.

Storage Buffer:

PBS with 0.02% sodium azide and 50% glycerol pH 7.3.

Aliquoting is unnecessary for -20°C storage

For technical support and original validation data for this product please contact:

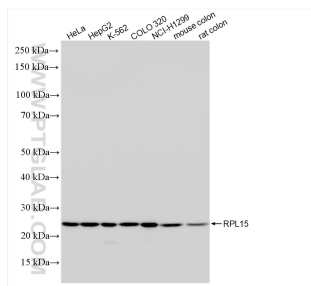
T: 4006900926

E: [Proteintech-CN@ptglab.com](mailto:Proteintech-CN@ptglab.com)

W: [ptgcn.com](http://ptgcn.com)

This product is exclusively available under Proteintech Group brand and is not available to purchase from any other manufacturer.

## Selected Validation Data



Various lysates were subjected to SDS PAGE followed by western blot with 84900-1-RR (RPL15 antibody) at dilution of 1:10000 incubated at room temperature for 1.5 hours.