

For Research Use Only

PSPH Recombinant antibody

Catalog Number: 84899-5-RR



Basic Information

Catalog Number:

84899-5-RR

Concentration:

1000 μ g/ml

Source:

Rabbit

Isotype:

IgG

Immunogen Catalog Number:

AG5972

GenBank Accession Number:

BC063614

GeneID (NCBI):

5723

UNIPROT ID:

P78330

Full Name:

phosphoserine phosphatase

Calculated MW:

25 kDa

Observed MW:

25-28 kDa

Purification Method:

Protein A purification

CloneNo.:

242518C4

Recommended Dilutions:

WB 1:2000-1:10000

Applications

Tested Applications:

WB, ELISA

Species Specificity:

human, mouse, rat

Positive Controls:

WB : A375 cells, MCF-7 cells, U-87 MG cells, HepG2 cells, NIH/3T3 cells, HSC-T6 cells

Background Information

Storage

Storage:

Store at -20°C. Stable for one year after shipment.

Storage Buffer:

PBS with 0.02% sodium azide and 50% glycerol pH 7.3.

Aliquoting is unnecessary for -20°C storage

For technical support and original validation data for this product please contact:

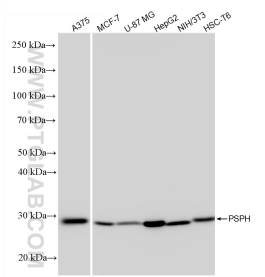
T: 4006900926

E: Proteintech-CN@ptglab.com

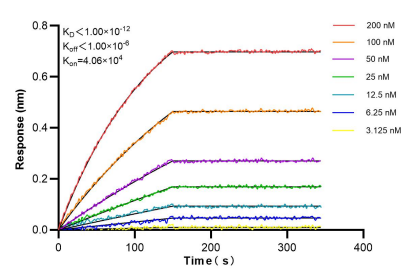
W: ptgcn.com

This product is exclusively available under Proteintech Group brand and is not available to purchase from any other manufacturer.

Selected Validation Data



Various lysates were subjected to SDS PAGE followed by western blot with 84899-5-RR (PSPH antibody) at dilution of 1:5000 incubated at room temperature for 1.5 hours.



Biolayer interferometry (BLI) kinetic assays of 84899-5-RR against Human PSPH were performed. The affinity constant is below 1 pM.