

For Research Use Only

CD16a Recombinant antibody, PBS Only (Capture/Detector)

Catalog Number: 84897-2-PBS



Basic Information

Catalog Number:

84897-2-PBS

Size:

1 mg/ml

Source:

Rabbit

Isotype:

IgG

GenBank Accession Number:

GeneID (NCBI):

2214

ENSEMBL Gene ID:

ENSG00000203747

Full Name:

Fc fragment of IgG, low affinity IIIa,
receptor (CD16a)

Purification Method:

Protein A purification

CloneNo.:

242426E9

Applications

Tested Applications:

Cytometric bead array, Sandwich ELISA, Indirect ELISA,
Sample test

Species Specificity:

human

Background Information

Storage

Storage:

Store at -80°C.

The product is shipped with ice packs. Upon receipt, store it immediately at -80°C

Storage Buffer:

PBS Only

For technical support and original validation data for this product please contact:

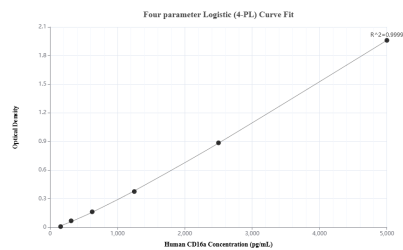
T: 4006900926

E: Proteintech-CN@ptglab.com

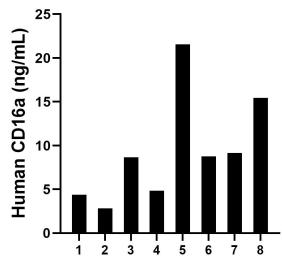
W: ptgcn.com

This product is exclusively available under Proteintech Group brand and is not available to purchase from any other manufacturer.

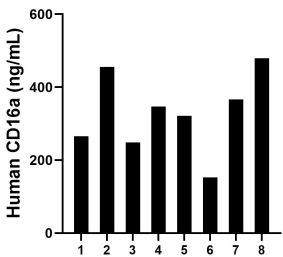
Selected Validation Data



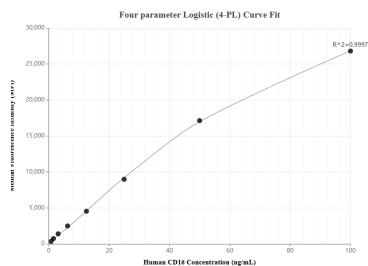
Sandwich ELISA standard curve of MP01617-3, Human CD16a Recombinant Matched Antibody Pair - PBS only. 84897-2-PBS was coated to a plate as the capture antibody and incubated with serial dilutions of standard Eg2488. 84897-4-PBS was HRP conjugated as the detection antibody. Range: 156.3-5000 pg/mL



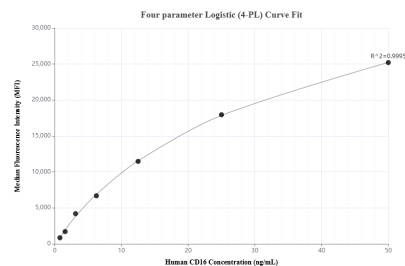
Urine of eight individual healthy human donors was measured. The human CD16a concentration of detected samples was determined to be 9.45 ng/mL with a range of 2.83 - 21.56 ng/mL



Serum of eight individual healthy human donors was measured. The human CD16a concentration of detected samples was determined to be 329.57 ng/mL with a range of 152.51- 455.59 ng/mL



Cytometric bead array standard curve of MP01617-2, CD16a Recombinant Matched Antibody Pair, PBS Only. Capture antibody: 84897-2-PBS. Detection antibody: 84897-3-PBS. Standard: Eg2488. Range: 0.781-100 ng/mL



Cytometric bead array standard curve of MP01617-1, CD16a Recombinant Matched Antibody Pair, PBS Only. Capture antibody: 84897-1-PBS. Detection antibody: 84897-2-PBS. Standard: Eg2488. Range: 0.781-50 ng/mL