

For Research Use Only

SUZ12 Recombinant antibody

Catalog Number: 84895-3-RR



Basic Information

Catalog Number:

84895-3-RR

Concentration:

1000 µg/ml

Source:

Rabbit

Isotype:

IgG

GenBank Accession Number:

NM_015355

GeneID (NCBI):

23512

UNIPROT ID:

Q15022

Full Name:

Suppressor of zeste 12 homolog
(Drosophila)

Calculated MW:

83 kDa

Observed MW:

80-90 kDa

Purification Method:

Protein A purification

CloneNo.:

242491B3

Recommended Dilutions:

WB: 1:1000-1:6000

IF/ICC: 1:250-1:1000

FC (Intra): 0.25 µg per 10⁶ cells in a
100 µl suspension

Applications

Tested Applications:

WB, IF/ICC, FC (Intra), ELISA

Species Specificity:

human

Positive Controls:

WB: HeLa cells, HEK-293 cells, COLO 320 cells, MCF-7 cells

IF/ICC: HeLa cells, MCF-7 cells

FC (Intra): HeLa cells,

Background Information

SUZ12, also termed CHET9, JAZ1 or KIAA0160, belongs to the VEFs (VRN2-EMF2-FIS2-SU(Z)12) family. It is a polycomb group (PcG) protein. SUZ12 is a component of the PRC2/EED-EZH2 complex, which methylates 'Lys-9' and 'Lys-27' of histone H3, leading to transcriptional repression of the affected target gene. The PRC2/EED-EZH2 complex may also serve as a recruiting platform for DNA methyltransferases, thereby linking two epigenetic repression systems. Genes repressed by the PRC2/EED-EZH2 complex include HOXC8, HOXA9, MYT1 and CDKN2A. A chromosomal aberration involving SUZ12 may be a cause of endometrial stromal tumors.

Storage

Storage:

Store at -20°C. Stable for one year after shipment.

Storage Buffer:

PBS with 0.02% sodium azide and 50% glycerol, pH7.3

Aliquoting is unnecessary for -20°C storage

For technical support and original validation data for this product please contact:

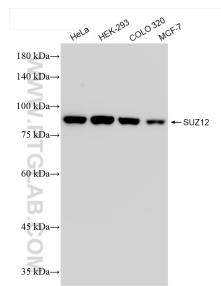
T: 4006900926

E: Proteintech-CN@ptglab.com

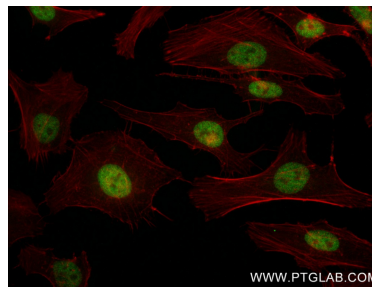
W: ptgcn.com

This product is exclusively available under Proteintech Group brand and is not available to purchase from any other manufacturer.

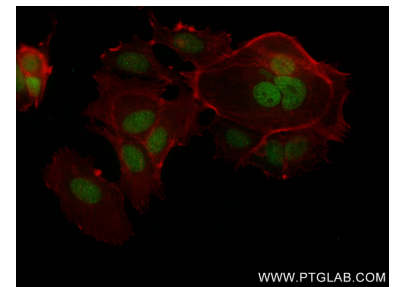
Selected Validation Data



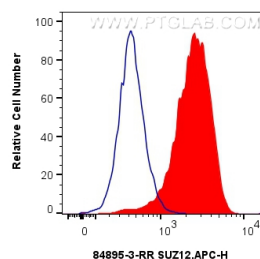
Various lysates were subjected to SDS PAGE followed by western blot with 84895-3-RR (SUZ12 antibody) at dilution of 1:3000 incubated at room temperature for 1.5 hours.



Immunofluorescent analysis of (4% PFA) fixed HeLa cells using SUZ12 antibody (84895-3-RR, Clone: 242491B3) at dilution of 1:500 and CoraLite®488-Conjugated Goat Anti-Rabbit IgG(H+L) (SA00013-2), CL594-Phalloidin (red).



Immunofluorescent analysis of (4% PFA) fixed MCF-7 cells using SUZ12 antibody (84895-3-RR, Clone: 242491B3) at dilution of 1:500 and CoraLite®488-Conjugated Goat Anti-Rabbit IgG(H+L) (SA00013-2), CL594-Phalloidin (red).



1×10^6 HeLa cells were intracellularly stained with 0.25 ug SUZ12 Recombinant antibody (84895-3-RR, Clone:242491B3) and APC-Conjugated Goat Anti-Rabbit IgG(H+L)(red), or 0.25 ug Rabbit IgG Isotype Control Recombinant Antibody (98136-1-RR, Clone: 240953C9) (blue). Cells were fixed and permeabilized with Transcription Factor Staining Buffer Kit (PF00011).