

For Research Use Only

AMACR/p504S Recombinant monoclonal antibody, PBS Only

Catalog Number: 84891-8-PBS



Basic Information

Catalog Number: 84891-8-PBS	GenBank Accession Number: NM_014324.6	Purification Method: Protein A purification
Source: Rabbit	GeneID (NCBI): 23600	CloneNo.: 250503G6
Isotype: IgG	UNIPROT ID: Q9UHK6-1	
Immunogen Catalog Number: EG4005	Full Name: alpha-methylacyl-CoA racemase	
	Calculated MW: 42 kDa	
	Observed MW: 20 kDa	

Applications

Tested Applications:
WB, IF/ICC, Indirect ELISA

Species Specificity:
human, mouse

Background Information

AMACR(Alpha-methyl acyl-CoA racemase) belongs to the CaiB/BaiF CoA-transferase family. It is a mitochondrial and peroxisomal enzyme that catalyzes the conversion of 2R stereoisomers of phytanic and pristanic acid to their S counterparts. AMACR has previously been shown to be a highly sensitive marker for colorectal and clinically localized prostate cancer (PCa). However, AMACR expression is down-regulated at the transcript and protein level in hormone-refractory metastatic PCa, suggesting a hormone-dependent expression of AMACR(PMID:12213712). It has 3 isoforms produced by alternative splicing and it can form a dimer of 70-75 kDa(PMID:21812041). Defects in AMACR are the cause of alpha-methyl acyl-CoA racemase deficiency (AMACRD) and congenital bile acid synthesis defect type 4 (CBAS4).

Storage

Storage:
Store at -80°C.
The product is shipped with ice packs. Upon receipt, store it immediately at -80°C

Storage Buffer:
PBS only, pH7.3

For technical support and original validation data for this product please contact:

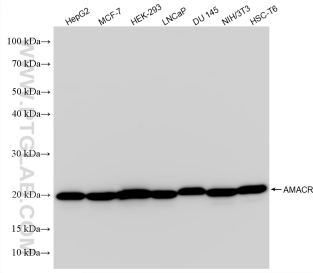
T: 4006900926

E: Proteintech-CN@ptglab.com

W: ptgcn.com

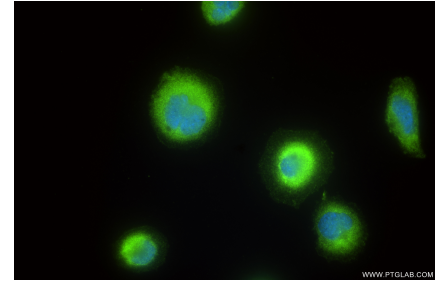
This product is exclusively available under Proteintech Group brand and is not available to purchase from any other manufacturer.

Selected Validation Data

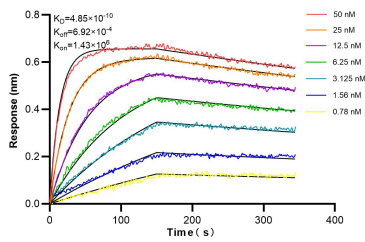


Various lysates were subjected to SDS PAGE followed by western blot with 84891-8-RR (AMACR antibody) at dilution of 1:10000 incubated at room temperature for 1.5 hours. This data was developed using the same antibody clone with 84891-8-PBS in a different storage buffer formulation.

Immunofluorescent analysis of (4% PFA) fixed LNCaP cells using AMACR antibody (84891-8-RR, Clone: 250503G6) at dilution of 1:1000 and CoraLite® 488-Conjugated Goat Anti-Rabbit IgG(H+L) (SA00013-2). This data was developed using the same antibody clone with 84891-8-PBS in a different storage buffer formulation.



Immunofluorescent analysis of (4% PFA) fixed DU 145 cells using AMACR antibody (84891-8-RR, Clone: 250503G6) at dilution of 1:400 and CoraLite® 488-Conjugated Goat Anti-Rabbit IgG(H+L) (SA00013-2). This data was developed using the same antibody clone with 84891-8-PBS in a different storage buffer formulation.



Biolayer interferometry (BLI) kinetic assays of 84891-8-RR against Human AMACR were performed. The affinity constant is 0.485 nM.