

For Research Use Only

PLSCR1 Recombinant monoclonal antibody, PBS Only (Detector)

Catalog Number: 84888-5-PBS



Basic Information

Catalog Number:

84888-5-PBS

Source:

Rabbit

Isotype:

IgG

Immunogen Catalog Number:

AG2172

GenBank Accession Number:

BC021100

GeneID (NCBI):

5359

UNIPROT ID:

O15162

Full Name:

phospholipid scramblase 1

Calculated MW:

318 aa, 35 kDa

Purification Method:

Protein A purification

CloneNo.:

242372C6

Applications

Tested Applications:

Sandwich ELISA, Indirect ELISA

Species Specificity:

human

Background Information

Storage

Storage:

Store at -80°C.

The product is shipped with ice packs. Upon receipt, store it immediately at -80°C

Storage Buffer:

PBS only, pH7.3

For technical support and original validation data for this product please contact:

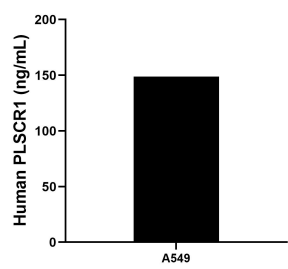
T: 4006900926

E: Proteintech-CN@ptglab.com

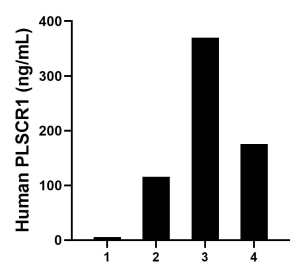
W: ptgcn.com

This product is exclusively available under Proteintech Group brand and is not available to purchase from any other manufacturer.

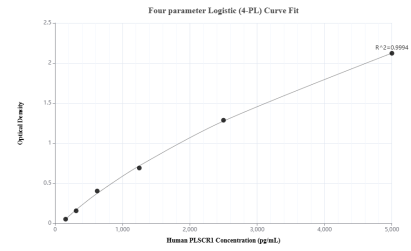
Selected Validation Data



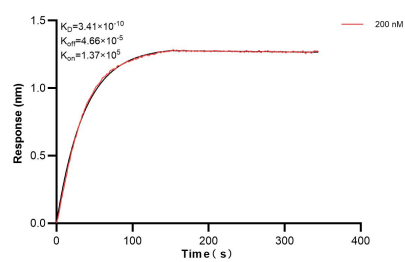
The mean PLSCR1 concentration was determined to be 148.88 ng/mL in A549 cell extract based on a 2.0 mg/mL extract load.



Urine of four individual healthy human donors was measured. The human PLSCR1 concentration of detected samples was determined to be 166.67 ng/mL with a range of 5.59 - 369.55 ng/mL.



Sandwich ELISA standard curve of MP01664-3, Human PLSCR1 Recombinant Matched Antibody Pair - PBS only. 84888-1-PBS was coated to a plate as the capture antibody and incubated with serial dilutions of standard Ag2172. 84888-5-PBS was HRP conjugated as the detection antibody. Range: 156.3-5000 pg/mL



Biolayer interferometry (BLI) kinetic assays of 84888-5-PBS against Human PLSCR1 were performed. The affinity constant is 0.341 nM.