

For Research Use Only

# PLSCR1 Recombinant antibody, PBS Only (Capture)

Catalog Number: 84888-1-PBS



## Basic Information

Catalog Number:	84888-1-PBS	GenBank Accession Number:	BC021100	Purification Method:	Protein A purification
Size:	1 mg/ml	GeneID (NCBI):	5359	CloneNo.:	242372B1
Source:	Rabbit	UNIPROT ID:	O15162		
Isotype:	IgG	Full Name:	phospholipid scramblase 1		
Immunogen Catalog Number:	AG2172	Calculated MW:	318 aa, 35 kDa		

## Applications

**Tested Applications:**  
Cytometric bead array, Sandwich ELISA, Indirect ELISA, Sample test

**Species Specificity:**  
human

## Background Information

### Storage

**Storage:**  
Store at -80°C.  
**The product is shipped with ice packs. Upon receipt, store it immediately at -80°C**

**Storage Buffer:**  
PBS Only

For technical support and original validation data for this product please contact:

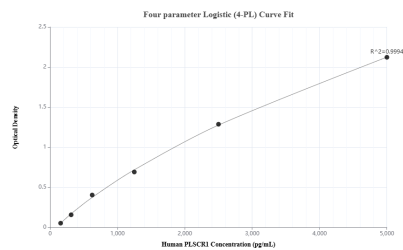
T: 4006900926

E: Proteintech-CN@ptglab.com

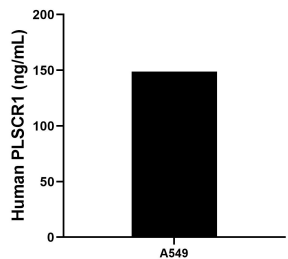
W: ptgcn.com

**This product is exclusively available under Proteintech Group brand and is not available to purchase from any other manufacturer.**

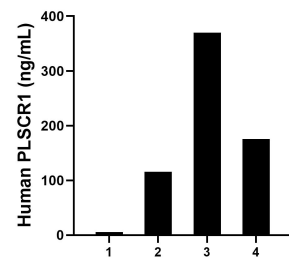
## Selected Validation Data



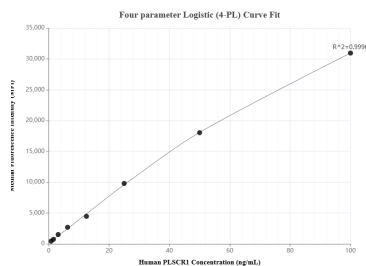
Sandwich ELISA standard curve of MP01664-3, Human PLSCR1 Recombinant Matched Antibody Pair - PBS only. 84888-1-PBS was coated to a plate as the capture antibody and incubated with serial dilutions of standard Ag2172. 84888-5-PBS was HRP conjugated as the detection antibody. Range: 156.3-5000 pg/mL



The mean PLSCR1 concentration was determined to be 148.88 ng/mL in A549 cell extract based on a 2.0 mg/mL extract load.



Urine of four individual healthy human donors was measured. The human PLSCR1 concentration of detected samples was determined to be 166.67 ng/mL with a range of 5.59 - 369.55 ng/mL.



Cytometric bead array standard curve of MP01664-2, PLSCR1 Recombinant Matched Antibody Pair, PBS Only. Capture antibody: 84888-1-PBS. Detection antibody: 84888-3-PBS. Standard: Ag2172. Range: 0.781-100 ng/mL