

For Research Use Only

SELE Recombinant antibody, PBS Only (Capture)

Catalog Number: 84887-3-PBS



Basic Information

Catalog Number:

84887-3-PBS

Size:

1 mg/ml

Source:

Rabbit

Isotype:

IgG

GenBank Accession Number:

BC142711

GeneID (NCBI):

6401

UNIPROT ID:

P16581

Full Name:

selectin E

Calculated MW:

610 aa, 67 kDa

Purification Method:

Protein A purification

CloneNo.:

241766C9

Applications

Tested Applications:

Sandwich ELISA, Indirect ELISA, Sample test

Species Specificity:

human

Background Information

Storage

Storage:

Store at -80°C.

The product is shipped with ice packs. Upon receipt, store it immediately at -80°C

Storage Buffer:

PBS Only

For technical support and original validation data for this product please contact:

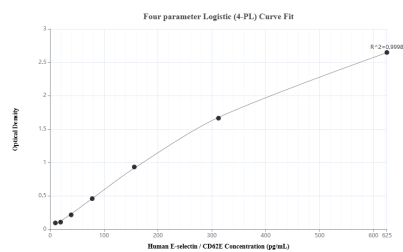
T: 4006900926

E: Proteintech-CN@ptglab.com

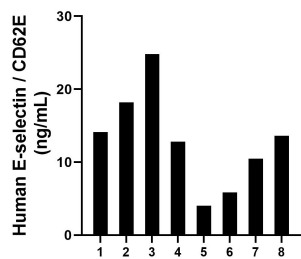
W: ptgcn.com

This product is exclusively available under Proteintech Group brand and is not available to purchase from any other manufacturer.

Selected Validation Data



Sandwich ELISA standard curve of MP01636-3, Human E-selectin / CD62E Recombinant Matched Antibody Pair - PBS only. 84887-3-PBS was coated to a plate as the capture antibody and incubated with serial dilutions of standard RP02341. 98189-1-PBS was HRP conjugated as the detection antibody. Range: 9.77-625 pg/mL



Serum of eight individual healthy human donors was measured. The human E-selectin / CD62E concentration of detected samples was determined to be 12.99 ng/mL with a range of 4.01 - 24.83 ng/mL