

For Research Use Only

Glutamate receptor 3/GluA3 Recombinant antibody

Catalog Number: 84885-4-RR



Basic Information

Catalog Number:

84885-4-RR

Concentration:

1000 ug/ml

Source:

Rabbit

Isotype:

IgG

Immunogen Catalog Number:

AG30898

GenBank Accession Number:

NM_007325

GeneID (NCBI):

2892

UNIPROT ID:

P42263

Full Name:

glutamate receptor, ionotropic,
AMPA 3

Calculated MW:

101 kDa

Observed MW:

101 kDa

Purification Method:

Protein A purification

CloneNo.:

242392C11

Recommended Dilutions:

WB 1:5000-1:50000

IHC 1:500-1:2000

IF-P 1:50-1:500

Applications

Tested Applications:

WB, IHC, IF-P, ELISA

Species Specificity:

human, mouse, rat

**Note-IHC: suggested antigen retrieval with
TE buffer pH 9.0; (*) Alternatively, antigen
retrieval may be performed with citrate
buffer pH 6.0**

Positive Controls:

WB : mouse brain tissue, rat brain tissue

IHC : mouse brain tissue,

IF-P : mouse brain tissue,

Background Information

Glutamate receptors are the predominant excitatory neurotransmitter receptors in the mammalian brain and are activated in a variety of normal neurophysiologic processes. GRIA3 (Glutamate ionotropic receptor AMPA type subunit 3), also known as Glutamate receptor R3 or A3 (GluR3 or GluA3), is associated with X-linked intellectual disability (ID), dysmorphic features, and non-syndromic epilepsy (PMID: 32977175). GRIA3 also plays a role as a mediator of tumor progression in pancreatic cancer downstream CUX1 (PMID: 20689760).

Storage

Storage:

Store at -20°C. Stable for one year after shipment.

Storage Buffer:

PBS with 0.02% sodium azide and 50% glycerol

Aliquoting is unnecessary for -20°C storage

For technical support and original validation data for this product please contact:

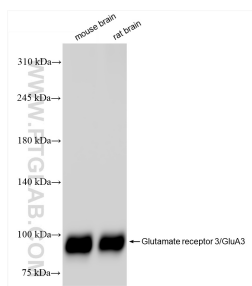
T: 4006900926

E: Proteintech-CN@ptglab.com

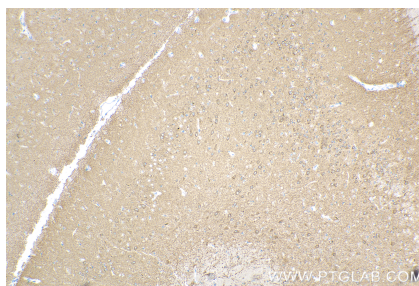
W: ptgcn.com

This product is exclusively available under Proteintech Group brand and is not available to purchase from any other manufacturer.

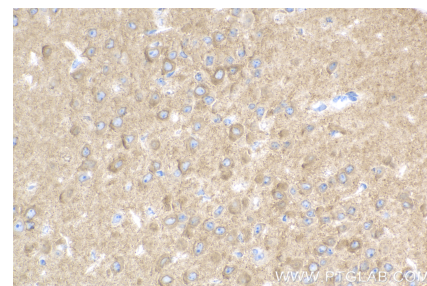
Selected Validation Data



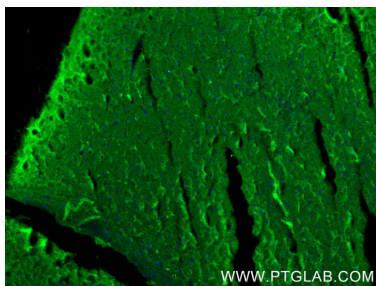
Various lysates were subjected to SDS PAGE followed by western blot with 84885-4-RR (Glutamate receptor 3/GluA3 antibody) at dilution of 1:10000 incubated at room temperature for 1.5 hours.



Immunohistochemical analysis of paraffin-embedded mouse brain tissue slide using 84885-4-RR (Glutamate receptor 3/GluA3 antibody) at dilution of 1:1000 (under 10x lens). Heat mediated antigen retrieval with Tris-EDTA buffer (pH 9.0).



Immunohistochemical analysis of paraffin-embedded mouse brain tissue slide using 84885-4-RR (Glutamate receptor 3/GluA3 antibody) at dilution of 1:1000 (under 40x lens). Heat mediated antigen retrieval with Tris-EDTA buffer (pH 9.0).



Immunofluorescent analysis of (4% PFA) fixed paraffin-embedded mouse brain tissue using Glutamate receptor 3/GluA3 antibody (84885-4-RR, Clone: 242392C11) at dilution of 1:200 and CoraLite@488-Conjugated Goat Anti-Rabbit IgG(H+L) (SA00013-2). Heat mediated antigen retrieval with Tris-EDTA buffer (pH 9.0).