

For Research Use Only

MTHFD1 Recombinant antibody, PBS Only (Detector)

Catalog Number: 84884-2-PBS



Basic Information

Catalog Number:

84884-2-PBS

Concentration:

1 mg/ml

Source:

Rabbit

Isotype:

IgG

Immunogen Catalog Number:

AG1225

GenBank Accession Number:

BC009806

GeneID (NCBI):

4522

UNIPROT ID:

P11586

Full Name:

methylenetetrahydrofolate
dehydrogenase (NADP+ dependent) 1,
methenyltetrahydrofolate
cyclohydrolase,
formyltetrahydrofolate synthetase

Calculated MW:

101 kDa

Purification Method:

Protein A purification

CloneNo.:

242388C7

Applications

Tested Applications:

Cytometric bead array, Sandwich ELISA, Indirect ELISA,
Sample test

Species Specificity:

human

Background Information

Storage

Storage:

Store at -80°C.

The product is shipped with ice packs. Upon receipt, store it immediately at -80°C

Storage Buffer:

PBS Only

For technical support and original validation data for this product please contact:

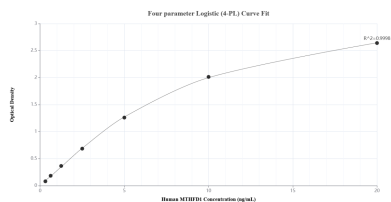
T: 4006900926

E: Proteintech-CN@ptglab.com

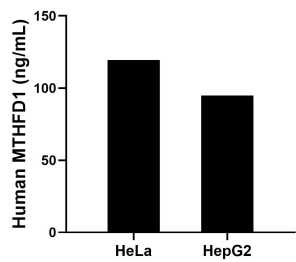
W: ptgcn.com

This product is exclusively available under Proteintech Group brand and is not available to purchase from any other manufacturer.

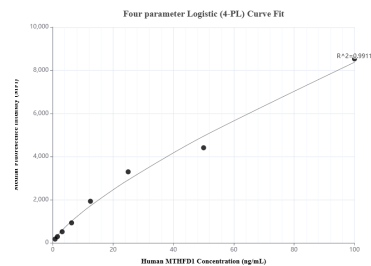
Selected Validation Data



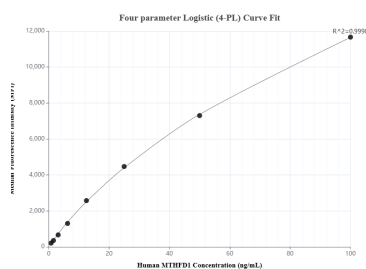
Sandwich ELISA standard curve of MP01654-3, Human MTHFD1 Recombinant Matched Antibody Pair - PBS only. 84884-4-PBS was coated to a plate as the capture antibody and incubated with serial dilutions of standard Ag1225. 84884-2-PBS was HRP conjugated as the detection antibody. Range: 0.313-20 ng/mL



The mean MTHFD1 concentration was determined to be 119.48 ng/mL in HeLa cell extract based on a 1.00 mg/mL extract load and 94.90 ng/mL in HepG2 cell extract based on a 2.30 mg/mL extract load.



Cytometric bead array standard curve of MP01654-2, MTHFD1 Recombinant Matched Antibody Pair, PBS Only. Capture antibody: 84884-3-PBS. Detection antibody: 84884-2-PBS. Standard: Ag1225. Range: 0.781-100 ng/mL



Cytometric bead array standard curve of MP01654-1, MTHFD1 Recombinant Matched Antibody Pair, PBS Only. Capture antibody: 84884-1-PBS. Detection antibody: 84884-2-PBS. Standard: Ag1225. Range: 0.781-100 ng/mL