

For Research Use Only

BCL3 Recombinant antibody, PBS Only (Capture/Detector)

Catalog Number: 84882-3-PBS



Basic Information

Catalog Number:

84882-3-PBS

Size:

1 mg/ml

Source:

Rabbit

Isotype:

IgG

Immunogen Catalog Number:

AG13375

GenBank Accession Number:

BC064993

GeneID (NCBI):

602

UNIPROT ID:

P20749

Full Name:

B-cell CLL/lymphoma 3

Calculated MW:

446 aa, 47 kDa

Purification Method:

Protein A purification

CloneNo.:

242233G12

Applications

Tested Applications:

Cytometric bead array, Sandwich ELISA, Indirect ELISA,
Sample test

Species Specificity:

human

Background Information

Storage

Storage:

Store at -80°C.

The product is shipped with ice packs. Upon receipt, store it immediately at -80°C

Storage Buffer:

PBS Only

For technical support and original validation data for this product please contact:

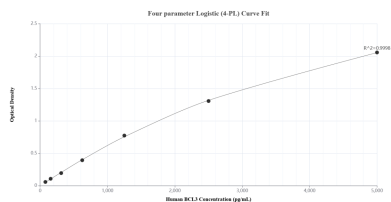
T: 4006900926

E: Proteintech-CN@ptglab.com

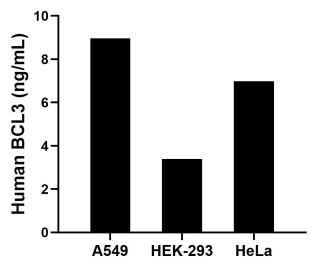
W: ptgcn.com

This product is exclusively available under Proteintech Group brand and is not available to purchase from any other manufacturer.

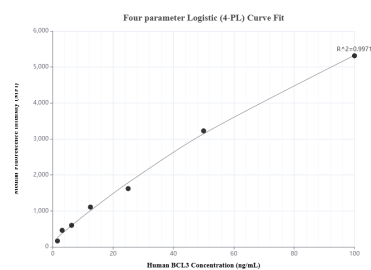
Selected Validation Data



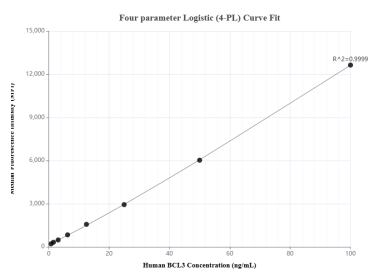
Sandwich ELISA standard curve of MP01655-3, Human BCL3 Recombinant Matched Antibody Pair - PBS only. 84882-4-PBS was coated to a plate as the capture antibody and incubated with serial dilutions of standard Ag13375. 84882-3-PBS was HRP conjugated as the detection antibody. Range: 78.1-5000 pg/mL.



The mean BCL3 concentration was determined to be 9.0 ng/mL in A549 cell extract based on a 2.3 mg/mL extract load, 3.4 ng/mL in HEK-293 cell extract based on a 2.9 mg/mL extract load and 7.0 ng/mL in HeLa cell extract based on a 1.0 mg/mL extract load.



Cytometric bead array standard curve of MP01655-2, BCL3 Recombinant Matched Antibody Pair, PBS Only. Capture antibody: 84882-3-PBS. Detection antibody: 84882-2-PBS. Standard: Ag13375. Range: 1.563-100 ng/mL.



Cytometric bead array standard curve of MP01655-1, BCL3 Recombinant Matched Antibody Pair, PBS Only. Capture antibody: 84882-3-PBS. Detection antibody: 84882-1-PBS. Standard: Ag13375. Range: 0.781-100 ng/mL.