

For Research Use Only

Mouse TCB1 Recombinant antibody, PBS Only (Capture)

Catalog Number: 84878-2-PBS



Basic Information

Catalog Number:

84878-2-PBS

Concentration:

1 mg/ml

Source:

Rabbit

Isotype:

IgG

Immunogen Catalog Number:

EG2437

GenBank Accession Number:

GeneID (NCBI):

UNIPROT ID:

P01852

Full Name:

Calculated MW:

19 kDa

Purification Method:

Protein A purification

CloneNo.:

241802D4

Applications

Tested Applications:

Cytometric bead array, Sandwich ELISA, Indirect ELISA,
Sample test

Species Specificity:

mouse

Background Information

Storage

Storage:

Store at -80°C.

The product is shipped with ice packs. Upon receipt, store it immediately at -80°C

Storage Buffer:

PBS only, pH7.3

For technical support and original validation data for this product please contact:

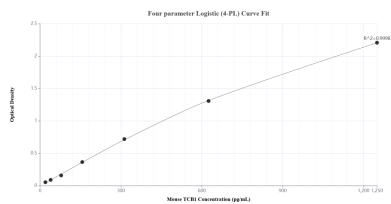
T: 4006900926

E: Proteintech-CN@ptglab.com

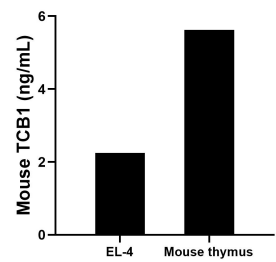
W: ptgcn.com

This product is exclusively available under Proteintech Group brand and is not available to purchase from any other manufacturer.

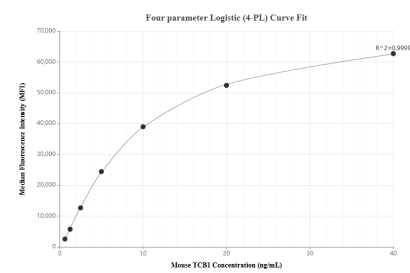
Selected Validation Data



Sandwich ELISA standard curve of MP01642-1, Mouse TCB1 Recombinant Matched Antibody Pair - PBS only. 84878-2-PBS was coated to a plate as the capture antibody and incubated with serial dilutions of standard Eg2437. 84878-1-PBS was HRP conjugated as the detection antibody. Range: 19.5-1250 pg/mL



The mean TCB1 concentration was determined to be 2.3 ng/mL in EL-4 cell extract based on a 3.7 mg/mL extract load and 5.6 ng/mL in mouse thymus tissue extract based on a 1.3 mg/mL extract load.



Cytometric bead array standard curve of MP01642-1, MOUSE TCB1 Recombinant Matched Antibody Pair, PBS Only. Capture antibody: 84878-2-PBS. Detection antibody: 84878-1-PBS. Standard: Eg2437. Range: 0.625-40 ng/mL