

For Research Use Only

WAPL Recombinant antibody, PBS Only

Catalog Number: 84877-5-PBS



Basic Information

| | | |
|-------------------------------------|--|--|
| Catalog Number: 84877-5-PBS | GenBank Accession Number: BC017393 | Purification Method: Protein A purification |
| Concentration: 1 mg/ml | GeneID (NCBI): 23063 | CloneNo.: 242443C1 |
| Source: Rabbit | UNIPROT ID: Q7Z5K2 | |
| Isotype: IgG | Full Name: wings apart-like homolog (Drosophila) | |
| Immunogen Catalog Number: AG9585 | Calculated MW: 142 kDa | |
| | Observed MW: 160-180 kDa | |

Applications

Tested Applications:
WB, IHC, IF/ICC, FC (Intra), Indirect ELISA

Species Specificity:
human, mouse

Background Information

The wings apart-like (WAPL, or WAPAL) protein was originally identified as a gene product that potentially regulates heterochromatin organization in *Drosophila melanogaster*. Human WAPL is a cohesin-binding protein that promotes sister-chromatid resolution in mitotic prophase. Overexpression of WAPL disturbs mitosis and cytokinesis, and contributes to tumor progression by induction of chromosomal instability. WAPAL has a predicted molecular weight of 140 kDa, however, as a result of its extensive phosphorylation it separates on a SDS gel as a band of approximately 160-180 kDa.

Storage

Storage:
Store at -80°C.
The product is shipped with ice packs. Upon receipt, store it immediately at -80°C

Storage Buffer:
PBS Only

For technical support and original validation data for this product please contact:

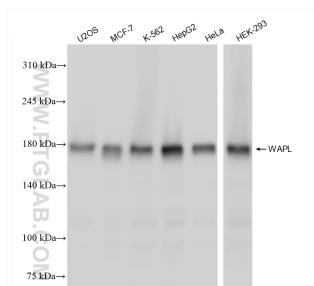
T: 4006900926

E: Proteintech-CN@ptglab.com

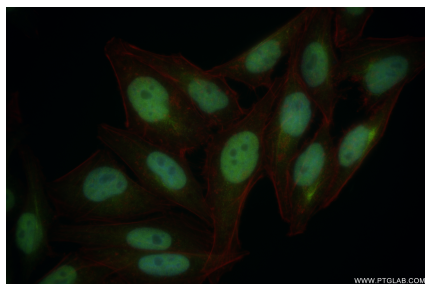
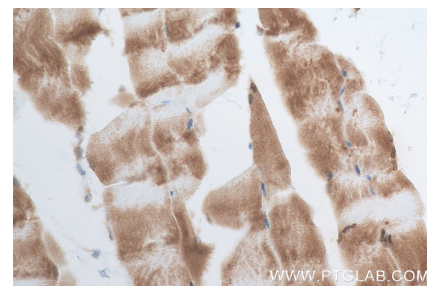
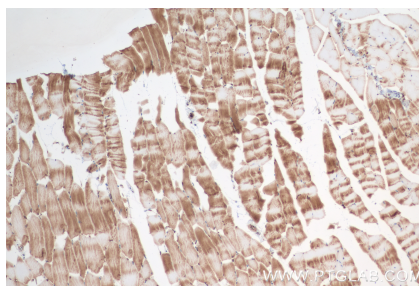
W: ptgcn.com

This product is exclusively available under Proteintech Group brand and is not available to purchase from any other manufacturer.

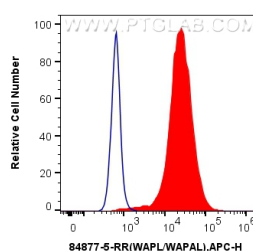
Selected Validation Data



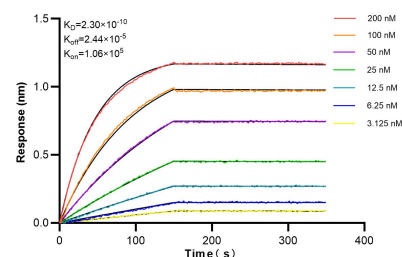
Various lysates were subjected to SDS PAGE followed by western blot with 84877-5-RR (WAPL antibody) at dilution of 1:20000 incubated at room temperature for 1.5 hours. This data was developed using the same antibody clone with 84877-5-PBS in a different storage buffer formulation.



Immunofluorescent analysis of (4% PFA) fixed HepG2 cells using WAPL antibody (84877-5-RR, Clone: 242443C1) at dilution of 1:400 and CoraLite®488-Conjugated Goat Anti-Rabbit IgG(H+L) (SA00013-2), CL594-Phalloidin (red). This data was developed using the same antibody clone with 84877-5-PBS in a different storage buffer formulation.



1x10⁶ HeLa cells were intracellularly stained with 0.25 ug WAPL Recombinant antibody (84877-5-RR, Clone:242443C1) and APC-Conjugated Goat Anti-Rabbit IgG(H+L)(red), or 0.25 ug Rabbit IgG Isotype Control RecAb (98136-1-RR, Clone: 240953C9) (blue). Cells were fixed with 4% PFA and permeabilized with Flow Cytometry Perm Buffer (PF00011-C). This data was developed using the same antibody clone with 84877-5-PBS in a different storage buffer formulation.



Biolayer interferometry (BLI) kinetic assays of 84877-5-RR against Human WAPL were performed. The affinity constant is 0.23 nM.