

For Research Use Only

WAPL Recombinant antibody, PBS Only (Detector)

Catalog Number: 84877-2-PBS



Basic Information

Catalog Number:

84877-2-PBS

Size:

1 mg/ml

Source:

Rabbit

Isotype:

IgG

Immunogen Catalog Number:

AG9585

GenBank Accession Number:

BC017393

GeneID (NCBI):

23063

UNIPROT ID:

Q7Z5K2

Full Name:

wings apart-like homolog
(Drosophila)

Calculated MW:

142 kDa

Purification Method:

Protein A purification

CloneNo.:

242443D9

Applications

Tested Applications:

Cytometric bead array, Sandwich ELISA, Indirect ELISA,
Sample test

Species Specificity:

human

Background Information

Storage

Storage:

Store at -80°C.

The product is shipped with ice packs. Upon receipt, store it immediately at -80°C

Storage Buffer:

PBS Only

For technical support and original validation data for this product please contact:

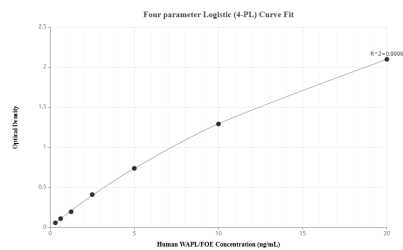
T: 4006900926

E: Proteintech-CN@ptglab.com

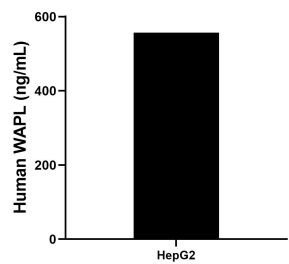
W: ptgcn.com

This product is exclusively available under Proteintech Group brand and is not available to purchase from any other manufacturer.

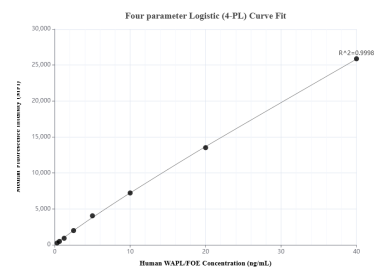
Selected Validation Data



Sandwich ELISA standard curve of MP01615-1, Human WAPL Recombinant Matched Antibody Pair - PBS only. 84877-1-PBS was coated to a plate as the capture antibody and incubated with serial dilutions of standard Ag9585. 84877-2-PBS was HRP conjugated as the detection antibody. Range: 0.313-20 ng/mL



The mean WAPL concentration was determined to be 556.41 ng/mL in HepG2 cell extract based on a 1.0 mg/mL extract load.



Cytometric bead array standard curve of MP01615-1, WAPL Recombinant Matched Antibody Pair, PBS Only. Capture antibody: 84877-1-PBS. Detection antibody: 84877-2-PBS. Standard: Ag9585. Range: 0.313-40 ng/mL