

For Research Use Only

# PDE10A Recombinant antibody

Catalog Number: 84869-1-RR



## Basic Information

Catalog Number:

84869-1-RR

Concentration:

1000 µg/ml

Source:

Rabbit

Isotype:

IgG

Immunogen Catalog Number:

AG12771

GenBank Accession Number:

BC104860

GeneID (NCBI):

10846

UNIPROT ID:

Q9Y233

Full Name:

phosphodiesterase 10A

Calculated MW:

779 aa, 88 kDa

Observed MW:

80 kDa

Purification Method:

Protein A purification

CloneNo.:

242357E12

Recommended Dilutions:

WB 1:2000-1:10000

## Applications

Tested Applications:

WB, FC (Intra), ELISA

Species Specificity:

human, mouse, rat

Positive Controls:

WB : mouse brain tissue, rat brain tissue

## Background Information

PDE10A (Phosphodiesterase 10A) is a single member of the PDE10 protein family, and it catalyzes both cAMP and cGMP hydrolysis (PMID: 34550322). The literature on PDE10A has been focused on psychiatric and neurological disorders because PDE10A expression is enriched in the striatal region of the brain under normal conditions (PMID: 12967715). Moreover, PDE10A expression is induced in various human tumor cell lines and PDE10A inhibition suppresses tumor cell growth (PMID: 37232184).

## Storage

Storage:

Store at -20°C. Stable for one year after shipment.

Storage Buffer:

PBS with 0.02% sodium azide and 50% glycerol pH 7.3.

Aliquoting is unnecessary for -20°C storage

For technical support and original validation data for this product please contact:

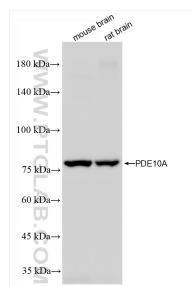
T: 4006900926

E: Proteintech-CN@ptglab.com

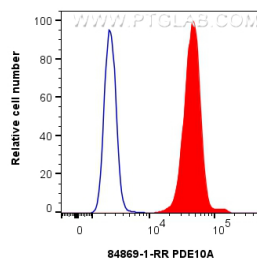
W: ptgcn.com

This product is exclusively available under Proteintech Group brand and is not available to purchase from any other manufacturer.

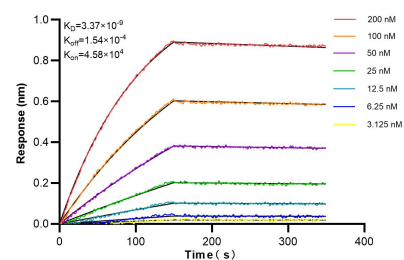
## Selected Validation Data



Various lysates were subjected to SDS PAGE followed by western blot with 84869-1-RR (PDE10A antibody) at dilution of 1:5000 incubated at room temperature for 1.5 hours.



$1 \times 10^6$  HeLa cells were intracellularly stained with 0.25  $\mu$ g PDE10A Recombinant antibody (84869-1-RR, Clone:242357E12) and CoraLite®488-Conjugated Goat Anti-Rabbit IgG(H+L) (SA00013-2) (red), or 0.25  $\mu$ g Rabbit IgG Isotype Control RecAb (98136-1-RR, Clone: 240953C9) (blue). Cells were fixed with 4% PFA and permeabilized with Flow Cytometry Perm Buffer (PF00011-C).



Biolayer interferometry (BLI) kinetic assays of 84869-1-RR against Human PDE10A were performed. The affinity constant is 3.37 nM.