

For Research Use Only

# CHRNA3 Recombinant antibody, PBS Only (Capture/Detector)

Catalog Number: 84860-1-PBS



## Basic Information

Catalog Number:	84860-1-PBS	GenBank Accession Number:	BC000513	Purification Method:	Protein A purification
Concentration:	1 mg/ml	GeneID (NCBI):	1136	CloneNo.:	242410A7
Source:	Rabbit	UNIPROT ID:	P32297		
Isotype:	IgG	Full Name:	cholinergic receptor, nicotinic, alpha 3		
Immunogen Catalog Number:	AG0272	Calculated MW:	57 kDa		

## Applications

**Tested Applications:**  
Cytometric bead array, Sandwich ELISA, Indirect ELISA, Sample test

**Species Specificity:**  
human

## Background Information

### Storage

**Storage:**  
Store at -80°C.  
**The product is shipped with ice packs. Upon receipt, store it immediately at -80°C**

**Storage Buffer:**  
PBS Only

For technical support and original validation data for this product please contact:

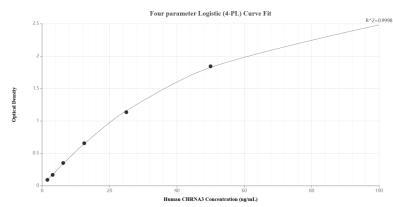
T: 4006900926

E: [Proteintech-CN@ptglab.com](mailto:Proteintech-CN@ptglab.com)

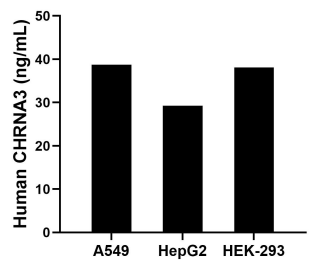
W: [ptgcn.com](http://ptgcn.com)

**This product is exclusively available under Proteintech Group brand and is not available to purchase from any other manufacturer.**

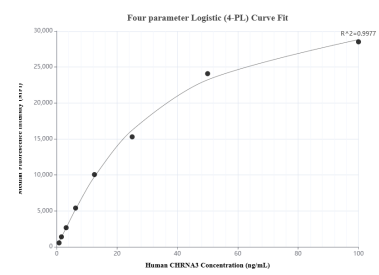
## Selected Validation Data



Sandwich ELISA standard curve of MP01633-3, Human CHRNA3 Recombinant Matched Antibody Pair - PBS only. 84860-1-PBS was coated to a plate as the capture antibody and incubated with serial dilutions of standard Ag0272. 84860-4-PBS was HRP conjugated as the detection antibody. Range: 1.56-100 ng/mL.



The mean CHRNA3 concentration was determined to be 38.77 ng/mL in A549 cell extract based on a 1.50 mg/mL extract load, 29.25 ng/mL in HepG2 cell extract based on a 1.00 mg/mL extract load and 38.10 ng/mL in HEK-293 cell extract based on a 2.90 mg/mL extract load.



Cytometric bead array standard curve of MP01633-1, CHRNA3 Recombinant Matched Antibody Pair, PBS Only. Capture antibody: 84860-2-PBS. Detection antibody: 84860-1-PBS. Standard: Ag0272. Range: 0.781-100 ng/mL.