

For Research Use Only

FOXP4 Recombinant antibody, PBS Only (Capture)

Catalog Number: 84855-1-PBS



Basic Information

Catalog Number:

84855-1-PBS

Concentration:

1000 ug/ml

Source:

Rabbit

Isotype:

IgG

Immunogen Catalog Number:

AG10047

GenBank Accession Number:

BC052803

GeneID (NCBI):

116113

UNIPROT ID:

Q8IVH2

Full Name:

forkhead box P4

Calculated MW:

678 aa, 73 kDa

Purification Method:

Protein A purification

CloneNo.:

242356B4

Applications

Tested Applications:

IF/ICC, FC (Intra), Cytometric bead array, Sandwich ELISA, Indirect ELISA, Sample test

Species Specificity:

human

Background Information

FOXP4, also named as FKHLA, belongs to the FOX family. FOXP4 has been implicated in diverse biological processes in tumor initiation and progression. It has been demonstrated that FOXP4 is significantly upregulated in breast cancer, hepatocellular carcinoma and oral squamous cell carcinoma (PMID: 34590150). FOXP4 has 3 isoforms with the molecular mass of 72-73 kDa.

Storage

Storage:

Store at -80°C.

The product is shipped with ice packs. Upon receipt, store it immediately at -80°C

Storage Buffer:

PBS Only

For technical support and original validation data for this product please contact:

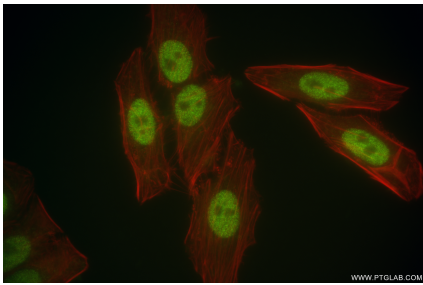
T: 4006900926

E: Proteintech-CN@ptglab.com

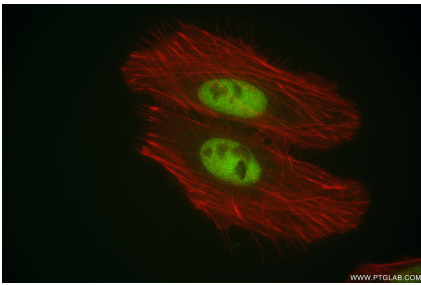
W: ptgcn.com

This product is exclusively available under Proteintech Group brand and is not available to purchase from any other manufacturer.

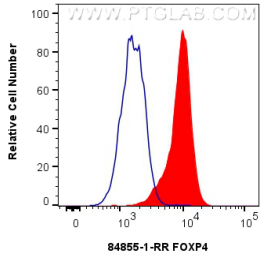
Selected Validation Data



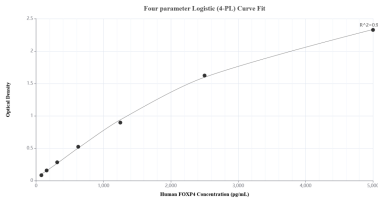
Immunofluorescent analysis of (4% PFA) fixed HepG2 cells using FOXP4 antibody (84855-1-RR, Clone: 242356B4) at dilution of 1:500 and CoraLite®488-Conjugated Goat Anti-Rabbit IgG(H+L) (SA00013-2), CL594-Phalloidin (red). This data was developed using the same antibody clone with 84855-1-PBS in a different storage buffer formulation.



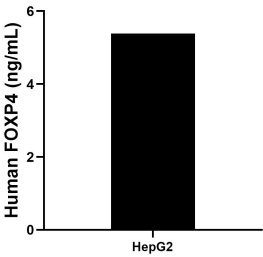
Immunofluorescent analysis of (4% PFA) fixed HeLa cells using FOXP4 antibody (84855-1-RR, Clone: 242356B4) at dilution of 1:500 and CoraLite®488-Conjugated Goat Anti-Rabbit IgG(H+L) (SA00013-2), CL594-Phalloidin (red). This data was developed using the same antibody clone with 84855-1-PBS in a different storage buffer formulation.



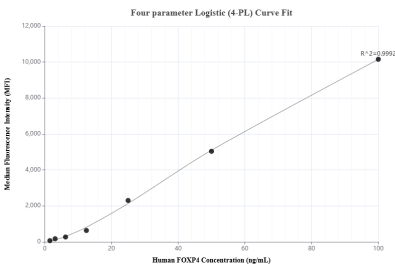
1x10⁶ HepG2 cells were intracellularly stained with 0.25 ug FOXP4 Recombinant antibody (84855-1-RR, Clone:242356B4) and CoraLite®488-Conjugated Goat Anti-Rabbit IgG(H+L) (SA00013-2)(red), or 0.25 ug Rabbit IgG Isotype Control RecAb (98136-1-RR, Clone: 240953C9) (blue). Cells were fixed and permeabilized with Transcription Factor Staining Buffer Kit (PF00011). This data was developed using the same antibody clone with 84855-1-PBS in a different storage buffer



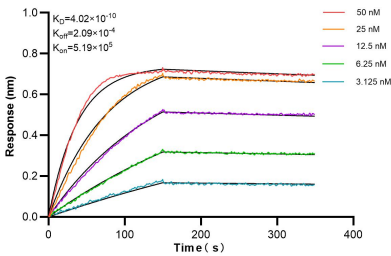
Sandwich ELISA standard curve of MP01621-2, Human FOXP4 Recombinant Matched Antibody Pair - PBS only. 84855-1-PBS was coated to a plate as the capture antibody and incubated with serial dilutions of standard Ag10047. 84855-3-PBS was HRP conjugated as the detection antibody. Range: 78.1-5000 pg/mL.



The mean FOXP4 concentration was determined to be 5.4 ng/mL in HepG2 cell extract based on a 1.0 mg/mL extract load.



Cytometric bead array standard curve of MP01621-1, FOXP4 Recombinant Matched Antibody Pair, PBS Only. Capture antibody: 84855-1-PBS. Detection antibody: 84855-2-PBS. Standard: Ag10047. Range: 1.563-100 ng/mL.



Biolayer interferometry (BLI) kinetic assays of 84855-1-RR against Human FOXP4 were performed. The affinity constant is 0.402 nM.