

Complement factor D Recombinant antibody

Catalog Number: 84851-4-RR

Basic Information

Catalog Number:	84851-4-RR	GenBank Accession Number:	NM_001928.3	Purification Method:	Protein A purification
Size:	1000 µg/ml	GeneID (NCBI):	1675	CloneNo.:	242244C2
Source:	Rabbit	UNIPROT ID:	P00746	Recommended Dilutions:	WB 1:2000-1:16000 IHC 1:400-1:1600
Isotype:	IgG	Full Name:	complement factor D (adipsin)		
		Calculated MW:	27kDa		
		Observed MW:	27 kDa		

Applications

Tested Applications:

WB, IHC, ELISA

Species Specificity:

human, mouse

Note-IHC: suggested antigen retrieval with TE buffer pH 9.0; (*) Alternatively, antigen retrieval may be performed with citrate buffer pH 6.0

Positive Controls:

WB : U-937 cells, THP-1 cells, human placenta tissue

IHC : mouse stomach tissue,

Background Information

Complement factor D, also known as adipsin, is a highly specific serine protease. Complement factor D is the rate-limiting enzyme in the alternative pathway of complement. It activates C3 convertase by cleaving factor B, which is a key step in the alternative pathway. Complement factor D catalyzes the cleavage of factor B to generate Ba (non-catalytic chain) and Bb (active catalytic subunit), which together with C3(H₂O) (or C3b) constitute the active C3 convertase C3(H₂O)Bb (or C3bBb). (PMID: 34566967; PMID: 27775713).

Storage

Storage:

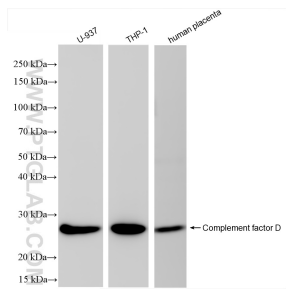
Store at -20°C. Stable for one year after shipment.

Storage Buffer:

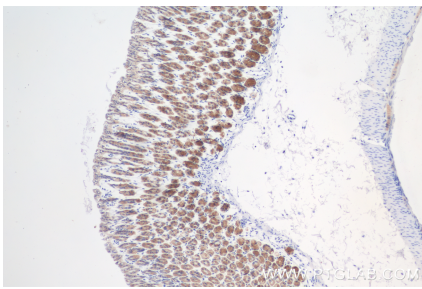
PBS with 0.02% sodium azide and 50% glycerol pH 7.3.

Aliquoting is unnecessary for -20°C storage

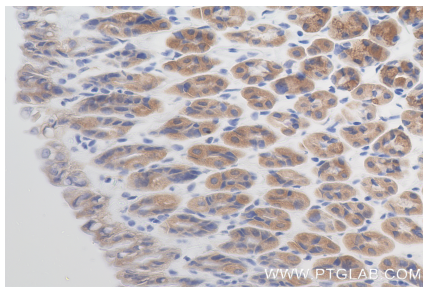
Selected Validation Data



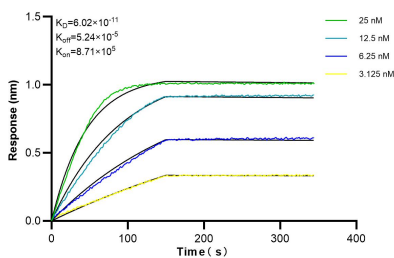
Various lysates were subjected to SDS PAGE followed by western blot with 84851-4-RR (Complement factor D antibody) at dilution of 1:8000 incubated at room temperature for 1.5 hours.



Immunohistochemical analysis of paraffin-embedded mouse stomach tissue slide using 84851-4-RR (Complement factor D antibody) at dilution of 1:800 (under 10x lens). Heat mediated antigen retrieval with Tris-EDTA buffer (pH 9.0).



Immunohistochemical analysis of paraffin-embedded mouse stomach tissue slide using 84851-4-RR (Complement factor D antibody) at dilution of 1:800 (under 40x lens). Heat mediated antigen retrieval with Tris-EDTA buffer (pH 9.0).



Biolayer interferometry (BLI) kinetic assays of 84851-4-RR against Human Complement factor D were performed. The affinity constant is 60.2 pM.