

For Research Use Only

Complement factor D Recombinant antibody, PBS Only (Capture)

Catalog Number: 84851-2-PBS



Basic Information

Catalog Number:

84851-2-PBS

Size:

1 mg/ml

Source:

Rabbit

Isotype:

IgG

GenBank Accession Number:

NM_001928.3

GeneID (NCBI):

1675

UNIPROT ID:

P00746

Full Name:

complement factor D (adipsin)

Calculated MW:

27kDa

Purification Method:

Protein A purification

CloneNo.:

242244B6

Applications

Tested Applications:

Cytometric bead array, Sandwich ELISA, Indirect ELISA,
Sample test

Species Specificity:

human

Background Information

Storage

Storage:

Store at -80°C.

The product is shipped with ice packs. Upon receipt, store it immediately at -80°C

Storage Buffer:

PBS Only

For technical support and original validation data for this product please contact:

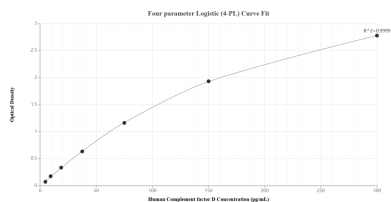
T: 4006900926

E: Proteintech-CN@ptglab.com

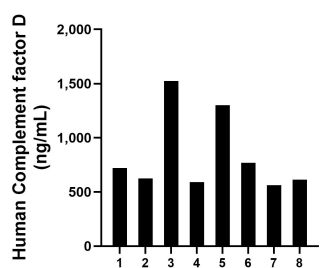
W: ptgcn.com

This product is exclusively available under Proteintech Group brand and is not available to purchase from any other manufacturer.

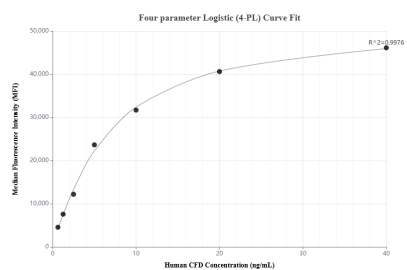
Selected Validation Data



Sandwich ELISA standard curve of MP01660-3, Human Complement factor D Recombinant Matched Antibody Pair - PBS only. 84851-2-PBS was coated to a plate as the capture antibody and incubated with serial dilutions of standard Eg1189. 84851-4-PBS was HRP conjugated as the detection antibody. Range: 4.69-300 pg/mL



Serum of eight individual healthy human donors was measured. The Complement factor D concentration of detected samples was determined to be 838.5 ng/mL with a range of 561.9-1525.4 ng/mL



Cytometric bead array standard curve of MP01660-2, Complement factor D Recombinant Matched Antibody Pair, PBS Only. Capture antibody: 84851-2-PBS. Detection antibody: 84851-3-PBS. Standard: Eg1189. Range: 0.625-40 ng/mL