

For Research Use Only

MICA Recombinant antibody, PBS Only

Catalog Number: 84850-5-PBS



Basic Information

Catalog Number:

84850-5-PBS

Size:

1 mg/ml

Source:

Rabbit

Isotype:

IgG

GenBank Accession Number:

BC016929

GeneID (NCBI):

100507436

UNIPROT ID:

Q29983

Full Name:

MHC class I polypeptide-related sequence A

Calculated MW:

383 aa, 43 kDa

Observed MW:

58 kDa

Purification Method:

Protein A purification

CloneNo.:

242004C2

Applications

Tested Applications:

WB, Indirect ELISA

Species Specificity:

human

Background Information

Human MHC class I chain-related genes located within the HLA class I region of chromosome 6 encode MHC class I chain-related A and B (MICA and MICB) (PMID: 11429322). MICA and MICB are stress-inducible surface molecules that are not associated with β 2-microglobulin and do not present peptides (PMID: 9497295). They are expressed in intestinal epithelium and many epithelial tumors (PMID: 10359807). MICA and MICB are ligands for NKG2D which is an activating receptor that is expressed on most natural killer (NK) cells, CD8 α β T cells, and γ δ T cells (PMID: 10426993, 11491531).

Storage

Storage:

Store at -80°C.

The product is shipped with ice packs. Upon receipt, store it immediately at -80°C

Storage Buffer:

PBS Only

For technical support and original validation data for this product please contact:

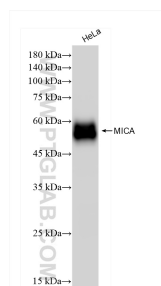
T: 4006900926

E: Proteintech-CN@ptglab.com

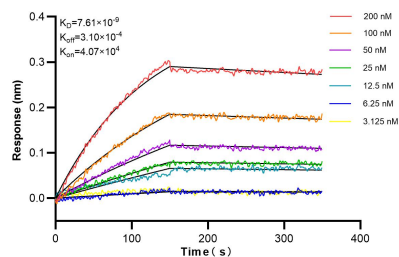
W: ptgcn.com

This product is exclusively available under Proteintech Group brand and is not available to purchase from any other manufacturer.

Selected Validation Data



HeLa cells were subjected to SDS PAGE followed by western blot with 84850-5-RR (MICA antibody) at dilution of 1:4000 incubated at room temperature for 1.5 hours. This data was developed using the same antibody clone with 84850-5-PBS in a different storage buffer formulation.



Biolayer interferometry (BLI) kinetic assays of 84850-5-RR against Human MICA were performed. The affinity constant is 7.61 nM.