

For Research Use Only

REST Recombinant antibody, PBS Only (Detector)

Catalog Number: 84846-2-PBS



Basic Information

Catalog Number:	84846-2-PBS	GenBank Accession Number:	BC132859	Purification Method:	Protein A purification
Size:	1 mg/ml	GeneID (NCBI):	5978	CloneNo.:	241789B11
Source:	Rabbit	UNIPROT ID:	Q13127		
Isotype:	IgG	Full Name:	RE1-silencing transcription factor		
Immunogen Catalog Number:	AG17707	Calculated MW:	1097 aa, 122 kDa		

Applications

Tested Applications:
Cytometric bead array, Sandwich ELISA, Indirect ELISA, Sample test

Species Specificity:
human

Background Information

Storage

Storage:
Store at -80°C.
The product is shipped with ice packs. Upon receipt, store it immediately at -80°C

Storage Buffer:
PBS Only

For technical support and original validation data for this product please contact:

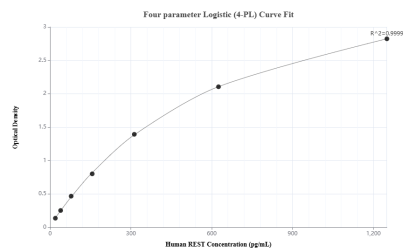
T: 4006900926

E: Proteintech-CN@ptglab.com

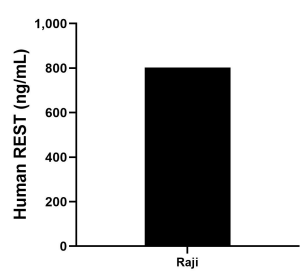
W: ptgcn.com

This product is exclusively available under Proteintech Group brand and is not available to purchase from any other manufacturer.

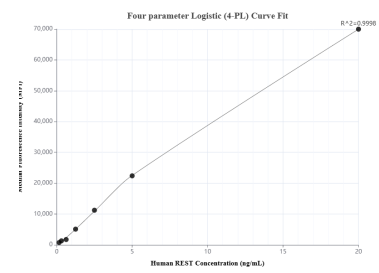
Selected Validation Data



Sandwich ELISA standard curve of MP01629-3, Human REST Recombinant Matched Antibody Pair - PBS only. 84846-6-PBS was coated to a plate as the capture antibody and incubated with serial dilutions of standard Ag17707. 84846-2-PBS was HRP conjugated as the detection antibody. Range: 19.5-1250 pg/mL



The mean REST concentration was determined to be 801.98 ng/mL in Raji cell extract based on a 1.0 mg/mL extract load.



Cytometric bead array standard curve of MP01629-1, REST Recombinant Matched Antibody Pair, PBS Only. Capture antibody: 84846-1-PBS. Detection antibody: 84846-2-PBS. Standard: Ag17707. Range: 0.156-20 ng/mL