

For Research Use Only

SLC6A4 Recombinant antibody, PBS Only (Capture)

Catalog Number: 84844-2-PBS



Basic Information

Catalog Number:

84844-2-PBS

Concentration:

1000 ug/ml

Source:

Rabbit

Isotype:

IgG

GenBank Accession Number:

NM_001045

GeneID (NCBI):

6532

UNIPROT ID:

P31645

Full Name:

solute carrier family 6
(neurotransmitter transporter,
serotonin), member 4

Calculated MW:

70 kDa

Purification Method:

Protein A purification

CloneNo.:

242252G5

Applications

Tested Applications:

Sandwich ELISA, Indirect ELISA, Sample test

Species Specificity:

human

Background Information

Storage

Storage:

Store at -80°C.

The product is shipped with ice packs. Upon receipt, store it immediately at -80°C

Storage Buffer:

PBS only, pH7.3

For technical support and original validation data for this product please contact:

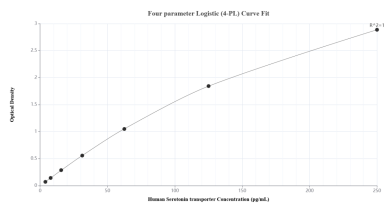
T: 4006900926

E: Proteintech-CN@ptglab.com

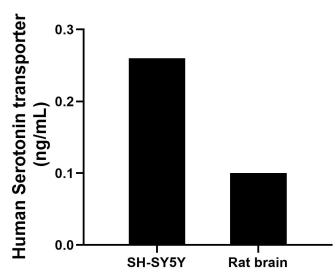
W: ptgcn.com

This product is exclusively available under Proteintech Group brand and is not available to purchase from any other manufacturer.

Selected Validation Data



Sandwich ELISA standard curve of MP01613-1, Human Serotonin transporter Recombinant Matched Antibody Pair - PBS only. 84844-2-PBS was coated to a plate as the capture antibody and incubated with serial dilutions of standard SY00407. 84844-1-PBS was HRP conjugated as the detection antibody. Range: 3.91-250 pg/mL



The mean Serotonin transporter concentration was determined to be 0.3 ng/mL in SH-SY5Y cell extract based on a 1.0 mg/mL extract load and 0.1 ng/mL in rat brain tissue extract based on a 1.6 mg/mL extract load.