

For Research Use Only

SLC6A4 Recombinant antibody, PBS Only (Detector)

Catalog Number: 84844-1-PBS



Basic Information

Catalog Number: 84844-1-PBS	GenBank Accession Number: NM_001045	Purification Method: Protein A purification
Concentration: 1000 ug/ml	GeneID (NCBI): 6532	CloneNo.: 242252A11
Source: Rabbit	UNIPROT ID: P31645	
Isotype: IgG	Full Name: solute carrier family 6 (neurotransmitter transporter, serotonin), member 4	
	Calculated MW: 70 kDa	

Applications

Tested Applications:
Sandwich ELISA, Indirect ELISA, Sample test

Species Specificity:
human

Background Information

Storage

Storage:
Store at -80°C.
The product is shipped with ice packs. Upon receipt, store it immediately at -80°C

Storage Buffer:
PBS only, pH7.3

For technical support and original validation data for this product please contact:

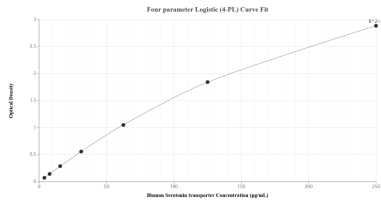
T: 4006900926

E: Proteintech-CN@ptglab.com

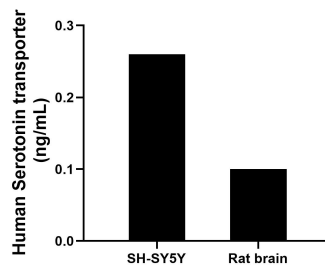
W: ptgcn.com

This product is exclusively available under Proteintech Group brand and is not available to purchase from any other manufacturer.

Selected Validation Data



Sandwich ELISA standard curve of MP01613-1, Human Serotonin transporter Recombinant Matched Antibody Pair - PBS only. 84844-2-PBS was coated to a plate as the capture antibody and incubated with serial dilutions of standard SY00407. 84844-1-PBS was HRP conjugated as the detection antibody. Range: 3.91-250 pg/mL



The mean Serotonin transporter concentration was determined to be 0.3 ng/mL in SH-SY5Y cell extract based on a 1.0 mg/mL extract load and 0.1 ng/mL in rat brain tissue extract based on a 1.6 mg/mL extract load.