

For Research Use Only

L3MBTL2 Recombinant antibody, PBS Only (Detector)

Catalog Number: 84828-1-PBS



Basic Information

Catalog Number:

84828-1-PBS

Concentration:

1 mg/ml

Source:

Rabbit

Isotype:

IgG

Immunogen Catalog Number:

AG19570

GenBank Accession Number:

BC017191

GeneID (NCBI):

83746

UNIPROT ID:

Q969R5

Full Name:

l(3)mbt-like 2 (Drosophila)

Calculated MW:

705 aa, 79 kDa

Purification Method:

Protein A purification

CloneNo.:

242288E7

Applications

Tested Applications:

Cytometric bead array, Sandwich ELISA, Indirect ELISA, Sample test

Species Specificity:

human

Background Information

Storage

Storage:

Store at -80°C.

The product is shipped with ice packs. Upon receipt, store it immediately at -80°C

Storage Buffer:

PBS Only

For technical support and original validation data for this product please contact:

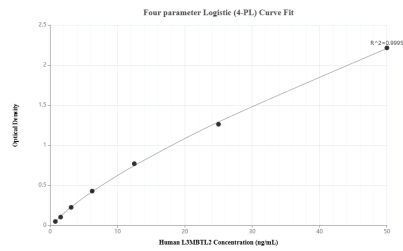
T: 4006900926

E: Proteintech-CN@ptglab.com

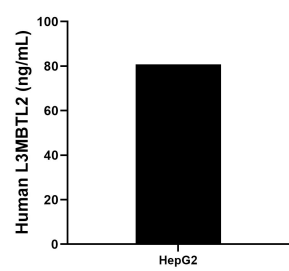
W: ptgcn.com

This product is exclusively available under Proteintech Group brand and is not available to purchase from any other manufacturer.

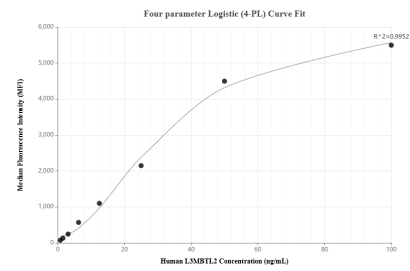
Selected Validation Data



Sandwich ELISA standard curve of MP01585-1, Human L3MBTL2 Recombinant Matched Antibody Pair - PBS only. 84828-2-PBS was coated to a plate as the capture antibody and incubated with serial dilutions of standard Ag19570. 84828-1-PBS was HRP conjugated as the detection antibody. Range: 0.781-50 ng/mL



The mean L3MBTL2 concentration was determined to be 80.77 ng/mL in HepG2 cell extract based on a 1.0 mg/mL extract load.



Cytometric bead array standard curve of MP01585-1, L3MBTL2 Recombinant Matched Antibody Pair, PBS Only. Capture antibody: 84828-2-PBS. Detection antibody: 84828-1-PBS. Standard: Ag19570. Range: 0.781-100 ng/mL