

For Research Use Only

# G-CSFR Recombinant antibody

Catalog Number: 84827-2-RR



## Basic Information

Catalog Number:

84827-2-RR

Concentration:

1000  $\mu$ g/ml

Source:

Rabbit

Isotype:

IgG

Immunogen Catalog Number:

EG2821

GenBank Accession Number:

NM\_000760.3

GeneID (NCBI):

1441

UNIPROT ID:

Q99062-1

Full Name:

colony stimulating factor 3 receptor  
(granulocyte)

Calculated MW:

92 kDa

Observed MW:

120-140 kDa

Purification Method:

Protein A purification

CloneNo.:

242246A5

Recommended Dilutions:

WB: 1:2000-1:10000

IHC: 1:400-1:1600

## Applications

Tested Applications:

WB, IHC, ELISA

Species Specificity:

human

**Note-IHC: suggested antigen retrieval with  
TE buffer pH 9.0; (\*) Alternatively, antigen  
retrieval may be performed with citrate  
buffer pH 6.0**

Positive Controls:

WB : THP-1 cells, HL-60 cells, human placenta tissue

IHC : human placenta tissue,

## Background Information

G-CSF-R, also named as CSF3R, CD114 and GCSFR is the receptor for colony stimulating factor 3, a cytokine that controls the production, differentiation, and function of granulocytes. It is a 130 kD to 150 kD glycoprotein single chain receptor which binds and activated by GCSF. In addition it may function in some adhesion or recognition events at the cell surface. It has been classified as a member of the hematopoietic (cytokine) receptor family, cytokine receptor class I, or the gp 130 related cytokine receptor family (although it does not apparently bind to gp 130). GCSF receptors can be found on neutrophils, myeloid leukemia cells that respond to GCSF, bone marrow cells of neutrophilic granulocyte lineage, and on placental trophoblasts. In addition, a soluble form is also expressed. Mutations in this gene are a cause of Kostmann syndrome, also known as severe congenital neutropenia.

## Storage

Storage:

Store at -20°C. Stable for one year after shipment.

Storage Buffer:

PBS with 0.02% sodium azide and 50% glycerol, pH7.3

Aliquoting is unnecessary for -20°C storage

For technical support and original validation data for this product please contact:

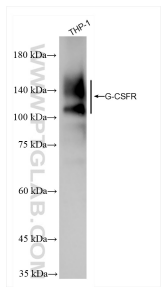
T: 4006900926

E: [Proteintech-CN@ptglab.com](mailto:Proteintech-CN@ptglab.com)

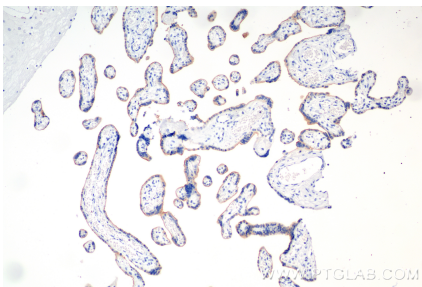
W: [ptgcn.com](http://ptgcn.com)

**This product is exclusively available under Proteintech Group brand and is not available to purchase from any other manufacturer.**

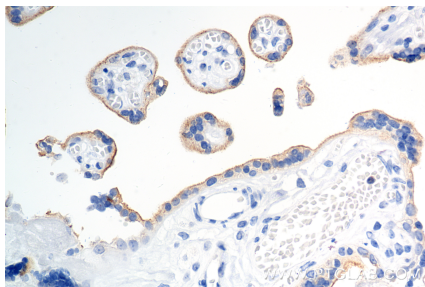
Selected Validation Data



THP-1 cells were subjected to SDS PAGE followed by western blot with 84827-2-RR (CSF3R antibody) at dilution of 1:5000 incubated at room temperature for 1.5 hours.



Immunohistochemical analysis of paraffin-embedded human placenta tissue slide using 84827-2-RR (G-CSFR antibody) at dilution of 1:800 (under 10x lens). Heat mediated antigen retrieval with Tris-EDTA buffer (pH 9.0).



Immunohistochemical analysis of paraffin-embedded human placenta tissue slide using 84827-2-RR (G-CSFR antibody) at dilution of 1:800 (under 40x lens). Heat mediated antigen retrieval with Tris-EDTA buffer (pH 9.0).