

For Research Use Only

# G-CSFR Recombinant antibody, PBS Only (Capture/Detector)

Catalog Number: 84827-2-PBS



## Basic Information

Catalog Number: 84827-2-PBS	GenBank Accession Number: NM_000760.3	Purification Method: Protein A purification
Size: 1 mg/ml	GeneID (NCBI): 1441	CloneNo.: 242246A5
Source: Rabbit	UNIPROT ID: Q99062-1	
Isotype: IgG	Full Name: colony stimulating factor 3 receptor (granulocyte)	
	Calculated MW: 92 kDa	
	Observed MW: 120-140 kDa	

## Applications

**Tested Applications:**  
WB, Cytometric bead array, Sandwich ELISA, Indirect ELISA, Sample test

**Species Specificity:**  
human

## Background Information

G-CSF-R, also named as CSF3R, CD114 and GCSFR is the receptor for colony stimulating factor 3, a cytokine that controls the production, differentiation, and function of granulocytes. It is a 130 kD to 150 kD glycoprotein single chain receptor which binds and activated by GCSF. In addition it may function in some adhesion or recognition events at the cell surface. It has been classified as a member of the hematopoietic (cytokine) receptor family, cytokine receptor class I, or the gp 130 related cytokine receptor family (although it does not apparently bind to gp 130). GCSF receptors can be found on neutrophils, myeloid leukemia cells that respond to GCSF, bone marrow cells of neutrophilic granulocyte lineage, and on placental trophoblasts. In addition, a soluble form is also expressed. Mutations in this gene are a cause of Kostmann syndrome, also known as severe congenital neutropenia.

## Storage

**Storage:**  
Store at -80°C.  
**The product is shipped with ice packs. Upon receipt, store it immediately at -80°C**

**Storage Buffer:**  
PBS Only

For technical support and original validation data for this product please contact:

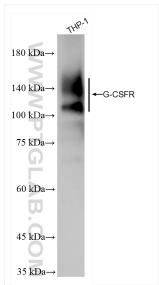
T: 4006900926

E: [Proteintech-CN@ptglab.com](mailto:Proteintech-CN@ptglab.com)

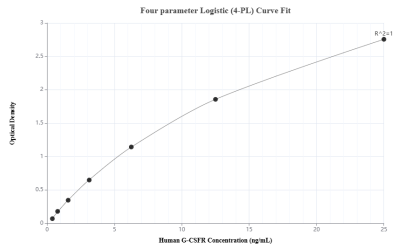
W: [ptgcn.com](http://ptgcn.com)

**This product is exclusively available under Proteintech Group brand and is not available to purchase from any other manufacturer.**

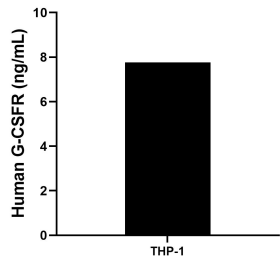
Selected Validation Data



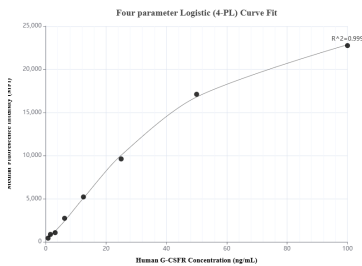
THP-1 cells were subjected to SDS PAGE followed by western blot with 84827-2-RR (CSF3R antibody) at dilution of 1:5000 incubated at room temperature for 1.5 hours. This data was developed using the same antibody clone with 84827-2-PBS in a different storage buffer formulation.



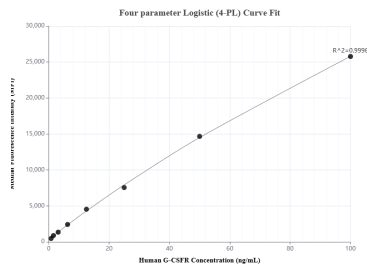
Sandwich ELISA standard curve of MP01609-3, Human G-CSFR Recombinant Matched Antibody Pair - PBS only. 84827-4-PBS was coated to a plate as the capture antibody and incubated with serial dilutions of standard Eg2821. 84827-2-PBS was HRP conjugated as the detection antibody. Range: 0.391-25 ng/mL



The mean G-CSFR concentration was determined to be 7.76 ng/mL in THP-1 cell extract based on a 4.4 mg/mL extract load.



Cytometric bead array standard curve of MP01609-2, G-CSFR Recombinant Matched Antibody Pair, PBS Only. Capture antibody: 84827-2-PBS. Detection antibody: 84827-3-PBS. Standard: Eg2821. Range: 0.781-100 ng/mL



Cytometric bead array standard curve of MP01609-1, G-CSFR Recombinant Matched Antibody Pair, PBS Only. Capture antibody: 84827-1-PBS. Detection antibody: 84827-2-PBS. Standard: Eg2821. Range: 0.781-100 ng/mL