

For Research Use Only

EZH2 Recombinant monoclonal antibody, PBS Only

Catalog Number: 84824-2-PBS



Basic Information

Catalog Number:	GenBank Accession Number:	Purification Method:
84824-2-PBS	BC010858	Protein A purification
Source:	GeneID (NCBI):	CloneNo.:
Rabbit	2146	242309F11
Isotype:	UNIPROT ID:	
IgG	Q15910	
Immunogen Catalog Number:	Full Name:	
AG16789	enhancer of zeste homolog 2 (Drosophila)	
	Calculated MW:	
	751 aa, 86 kDa	
	Observed MW:	
	90-102 kDa	

Applications

Tested Applications:
WB, IHC, IF/ICC, Indirect ELISA, ChIP-qPCR

Species Specificity:
human, mouse, rat

Background Information

EZH2 (enhancer of zeste homologue 2, also known as KMT6) is a member of Polycomb group (PcG) family and encodes a histone methyl transferase that has an essential role in promoting histone H3 lysine 27 trimethylation (H3K27me3) and epigenetic gene silencing. EZH2 is important for cell proliferation and inhibition of cell differentiation, and is implicated in cancer progression. Overexpression of EZH2 is a marker of advanced and metastatic disease in many solid tumors, including prostate and breast cancer. This antibody detected EZH2 protein as a single band with a molecular weight (MW) of 91-100 kDa in multiple cell lines. The phosphorylation may result in the higher molecular weight (calculated MW as 80-86 kDa). (20935635, 21367748)

Storage

Storage:
Store at -80°C.
The product is shipped with ice packs. Upon receipt, store it immediately at -80°C

Storage Buffer:
PBS only, pH7.3

For technical support and original validation data for this product please contact:

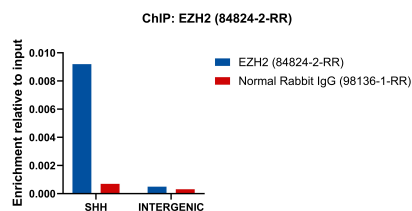
T: 4006900926

E: Proteintech-CN@ptglab.com

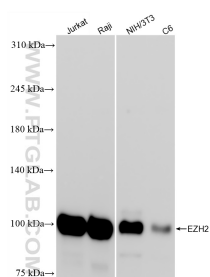
W: ptgcn.com

This product is exclusively available under Proteintech Group brand and is not available to purchase from any other manufacturer.

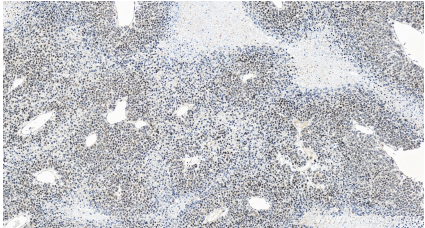
Selected Validation Data



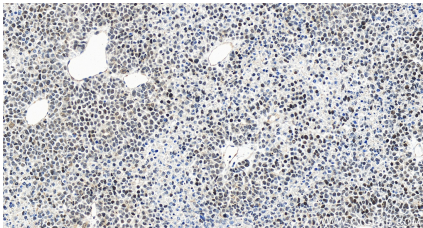
Chromatin was prepared from NCCIT cells. Cells were fixed with formaldehyde for 10 minutes. The ChIP was performed with 20 µg of cross-linked chromatin, 5 µg of EZH2 (84824-2-RR) or 5 µg of Normal Rabbit IgG (98136-1-RR), and 20 µl of Protein A Magarose Beads. The immunoprecipitated DNA was quantified by real-time PCR. This data was developed using the same antibody clone with 84824-2-PBS in a different storage buffer formulation.



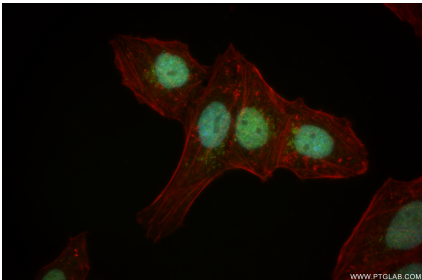
Various lysates were subjected to SDS PAGE followed by western blot with 84824-2-RR (EZH2 antibody) at dilution of 1:4000 incubated at room temperature for 1.5 hours. This data was developed using the same antibody clone with 84824-2-PBS in a different storage buffer formulation.



Immunohistochemical analysis of paraffin-embedded human liver cancer tissue slide using 84824-2-RR (EZH2 antibody) at dilution of 1:500 (under 20x lens). Heat mediated antigen retrieval with Tris-EDTA buffer (pH 9.0). This data was developed using the same antibody clone with 84824-2-PBS in a different storage buffer formulation.



Immunohistochemical analysis of paraffin-embedded human liver cancer tissue slide using 84824-2-RR (EZH2 antibody) at dilution of 1:500 (under 20x lens). Heat mediated antigen retrieval with Tris-EDTA buffer (pH 9.0). This data was developed using the same antibody clone with 84824-2-PBS in a different storage buffer formulation.



Immunofluorescent analysis of (4% PFA) fixed HepG2 cells using EZH2 antibody (84824-2-RR, Clone: 242309F11) at dilution of 1:500 and Coralite®488-Conjugated Goat Anti-Rabbit IgG(H+L) (SA00013-2), CL594-Phalloidin (red). This data was developed using the same antibody clone with 84824-2-PBS in a different storage buffer formulation.



Biolayer interferometry (BLI) kinetic assays of 84824-2-RR against Human EZH2 were performed. The affinity constant is 2.73 nM.