

For Research Use Only

# STAU1 Recombinant antibody, PBS Only (Detector)

Catalog Number: 84822-3-PBS



## Basic Information

Catalog Number:

84822-3-PBS

Concentration:

1 mg/ml

Source:

Rabbit

Isotype:

IgG

Immunogen Catalog Number:

AG5464

GenBank Accession Number:

BC050432

GeneID (NCBI):

6780

UNIPROT ID:

O95793

Full Name:

stau1, RNA binding protein,  
homolog 1 (Drosophila)

Calculated MW:

63 kDa

Purification Method:

Protein A purification

CloneNo.:

242179G11

## Applications

Tested Applications:

Cytometric bead array, Sandwich ELISA, Indirect ELISA,  
Sample test

Species Specificity:

human

## Background Information

### Storage

Storage:

Store at -80°C.

**The product is shipped with ice packs. Upon receipt, store it immediately at -80°C**

Storage Buffer:

PBS Only

For technical support and original validation data for this product please contact:

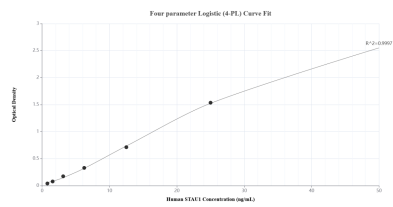
T: 4006900926

E: [Proteintech-CN@ptglab.com](mailto:Proteintech-CN@ptglab.com)

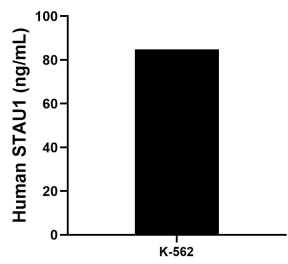
W: [ptgcn.com](http://ptgcn.com)

**This product is exclusively available under Proteintech Group brand and is not available to purchase from any other manufacturer.**

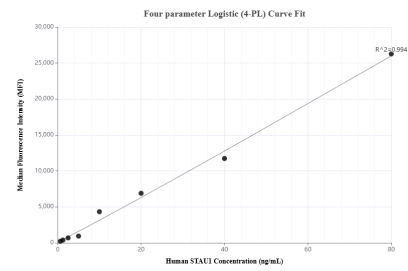
# Selected Validation Data



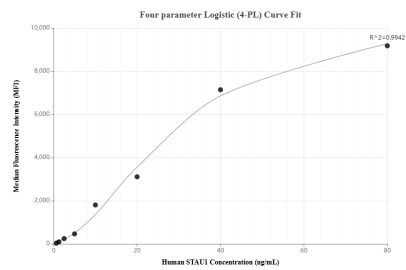
Sandwich ELISA standard curve of MP01603-2, Human STAU1 Recombinant Matched Antibody Pair - PBS only. 84822-1-PBS was coated to a plate as the capture antibody and incubated with serial dilutions of standard Ag5464. 84822-3-PBS was HRP conjugated as the detection antibody. Range: 0.781-50 ng/mL



The mean STAU1 concentration was determined to be 84.84 ng/mL in K-562 cell extract based on a 2.50 mg/mL extract load.



Cytometric bead array standard curve of MP01603-1, STAU1 Recombinant Matched Antibody Pair, PBS Only. Capture antibody: 84822-2-PBS. Detection antibody: 84822-3-PBS. Standard: Ag5464. Range: 0.625-80 ng/mL



Cytometric bead array standard curve of MP01603-2, STAU1 Recombinant Matched Antibody Pair, PBS Only. Capture antibody: 84822-1-PBS. Detection antibody: 84822-3-PBS. Standard: Ag5464. Range: 0.625-80 ng/mL