

For Research Use Only

STAU1 Recombinant antibody, PBS Only (Capture)

Catalog Number: 84822-1-PBS



Basic Information

Catalog Number:

84822-1-PBS

Concentration:

1 mg/ml

Source:

Rabbit

Isotype:

IgG

Immunogen Catalog Number:

AG5464

GenBank Accession Number:

BC050432

GeneID (NCBI):

6780

UNIPROT ID:

O95793

Full Name:

stau1, RNA binding protein,
homolog 1 (Drosophila)

Calculated MW:

63 kDa

Purification Method:

Protein A purification

CloneNo.:

242179A7

Applications

Tested Applications:

Cytometric bead array, Sandwich ELISA, Indirect ELISA,
Sample test

Species Specificity:

human

Background Information

Storage

Storage:

Store at -80°C.

The product is shipped with ice packs. Upon receipt, store it immediately at -80°C

Storage Buffer:

PBS Only

For technical support and original validation data for this product please contact:

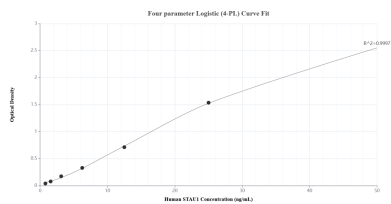
T: 4006900926

E: Proteintech-CN@ptglab.com

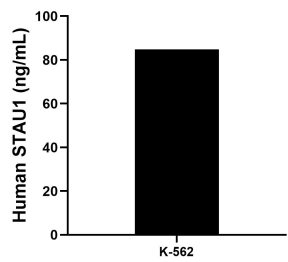
W: ptgcn.com

This product is exclusively available under Proteintech Group brand and is not available to purchase from any other manufacturer.

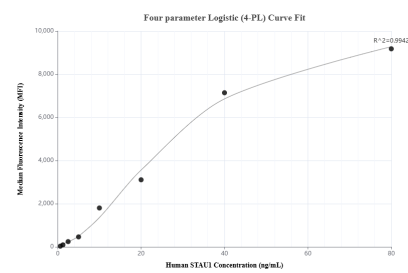
Selected Validation Data



Sandwich ELISA standard curve of MP01603-2, Human STAU1 Recombinant Matched Antibody Pair - PBS only. 84822-1-PBS was coated to a plate as the capture antibody and incubated with serial dilutions of standard Ag5464. 84822-3-PBS was HRP conjugated as the detection antibody. Range: 0.781-50 ng/mL



The mean STAU1 concentration was determined to be 84.84 ng/mL in K-562 cell extract based on a 2.50 mg/mL extract load.



Cytometric bead array standard curve of MP01603-2, STAU1 Recombinant Matched Antibody Pair, PBS Only. Capture antibody: 84822-1-PBS. Detection antibody: 84822-3-PBS. Standard: Ag5464. Range: 0.625-80 ng/mL