

For Research Use Only

Mouse Fc-epsilon RI-alpha (FcERI) Recombinant monoclonal antibody, PBS Only (Detector)

Catalog Number: 84816-6-PBS



Basic Information

Catalog Number: 84816-6-PBS	GenBank Accession Number: NM_010184.2	Purification Method: Protein A purification
Source: Rabbit	GeneID (NCBI): 14125	CloneNo.: 242008C10
Isotype: IgG	UNIPROT ID: P20489	
Immunogen Catalog Number: EG1740	Full Name: Fc receptor, IgE, high affinity I, alpha polypeptide	
	Calculated MW: 29 kDa	

Applications

Tested Applications:
Cytometric bead array, Indirect ELISA

Species Specificity:
mouse

Background Information

Storage

Storage:
Store at -80°C.
The product is shipped with ice packs. Upon receipt, store it immediately at -80°C

Storage Buffer:
PBS only, pH7.3

For technical support and original validation data for this product please contact:

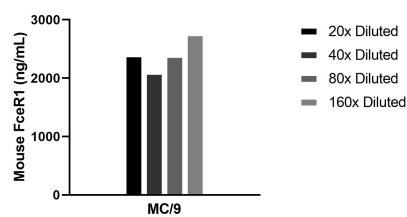
T: 4006900926

E: Proteintech-CN@ptglab.com

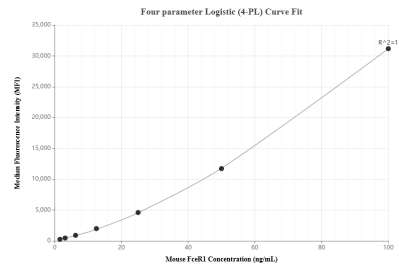
W: ptgcn.com

This product is exclusively available under Proteintech Group brand and is not available to purchase from any other manufacturer.

Selected Validation Data



The mean FceR1 concentration was determined to be 2398.7 ng/mL in MC/9 cell extract based on a 3.5 mg/mL extract load.



Cytometric bead array standard curve of MP01601-3, MOUSE FceR1 Recombinant Matched Antibody Pair, PBS Only. Capture antibody: 84816-2-PBS. Detection antibody: 84816-6-PBS. Standard: Eg1740. Range: 1.56-100 ng/mL.