

Midkine Recombinant antibody

Catalog Number: 84815-1-RR

Basic Information

Catalog Number:

84815-1-RR

Concentration:

1000 µg/ml

Source:

Rabbit

Isotype:

IgG

Immunogen Catalog Number:

AG24547

GenBank Accession Number:

BC011704

GeneID (NCBI):

4192

UNIPROT ID:

P21741

Full Name:

midkine (neurite growth-promoting factor 2)

Calculated MW:

16 kDa

Purification Method:

Protein A purification

CloneNo.:

241880H1

Recommended Dilutions:

IF/ICC 1:125-1:500

Applications

Tested Applications:

IF/ICC, FC (Intra), ELISA

Species Specificity:

human

Positive Controls:

IF/ICC : HeLa cells,

Background Information

Midkine is a heparin-binding growth factor identified over 20 years ago and enhances the survival, migration and many other activities of target cells. Midkine is rich in both basic amino acids and cysteine, and is not related to most other growth factors/cytokines. It is strongly expressed during embryonic periods, especially at the midgestation stage, and plays important roles in development, especially in neurogenesis. Midkine expression in adult tissue is generally weak or undetectable, and it is induced upon injury and exerts many activities related to tissue repair. The biological activities of midkine in malignant tumors include proliferation, angiogenesis, invasion and metastasis. Various cancers express significantly higher levels of the midkine protein in early stage tumor tissues than in adjacent normal tissue.

Storage

Storage:

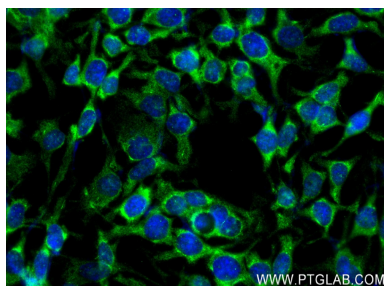
Store at -20°C. Stable for one year after shipment.

Storage Buffer:

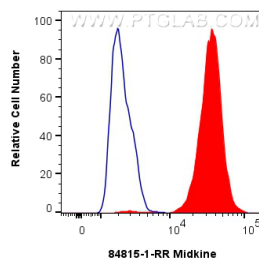
PBS with 0.02% sodium azide and 50% glycerol pH 7.3.

Aliquoting is unnecessary for -20°C storage

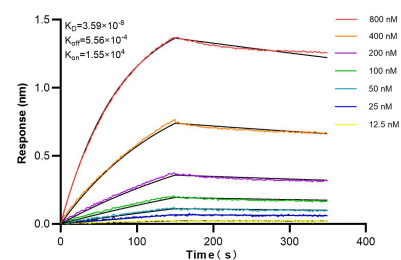
Selected Validation Data



Immunofluorescent analysis of (-20°C Ethanol) fixed HeLa cells using Midkine antibody (84815-1-RR, Clone: 241880H1) at dilution of 1:250 and CoraLite@488-Conjugated Goat Anti-Rabbit IgG(H+L) (SA00013-2).



1×10^6 HeLa cells were intracellularly stained with 0.25 μ g Midkine Recombinant antibody (84815-1-RR, Clone: 241880H1) and CoraLite@488-Conjugated Goat Anti-Rabbit IgG(H+L) (SA00013-2) (red), or 0.25 μ g Rabbit IgG Isotype Control RecAb (98136-1-RR, Clone: 240953C9) (blue). Cells were fixed with 4% PFA and permeabilized with Flow Cytometry Perm Buffer (PF00011-C).



Biolayer interferometry (BLI) kinetic assays of 84815-1-RR against Human Midkine were performed. The affinity constant is 35.9 nM.