

For Research Use Only

ALPPL2 Recombinant antibody, PBS Only

Catalog Number: 84813-1-PBS



Basic Information

Catalog Number:

84813-1-PBS

Size:

1 mg/ml

Source:

Rabbit

Isotype:

IgG

Immunogen Catalog Number:

AG13360

GenBank Accession Number:

BC014139

GeneID (NCBI):

251

UNIPROT ID:

P10696

Full Name:

alkaline phosphatase, placental-like

2

Calculated MW:

57 kDa

Observed MW:

70 kDa

Purification Method:

Protein A purification

CloneNo.:

241867A12

Applications

Tested Applications:

WB, IHC, Indirect ELISA

Species Specificity:

human

Background Information

ALPPL2 (alkaline phosphatase placental-like 2), a member of the human alkaline phosphatase family, could be a potential biomarker for early diagnosis of Pancreatic ductal adenocarcinoma.

Storage

Storage:

Store at -80°C.

The product is shipped with ice packs. Upon receipt, store it immediately at -80°C

Storage Buffer:

PBS Only

For technical support and original validation data for this product please contact:

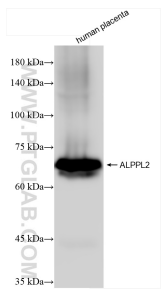
T: 4006900926

E: Proteintech-CN@ptglab.com

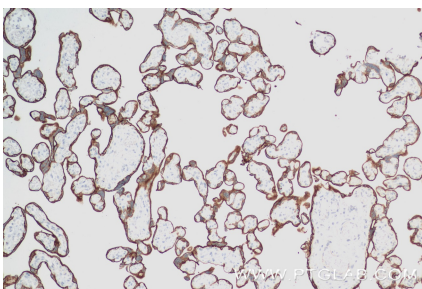
W: ptgcn.com

This product is exclusively available under Proteintech Group brand and is not available to purchase from any other manufacturer.

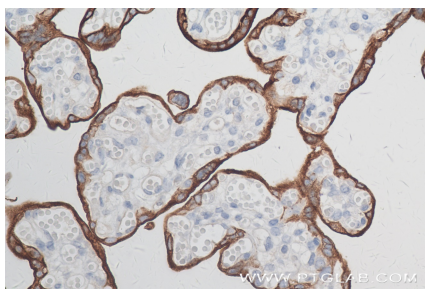
Selected Validation Data



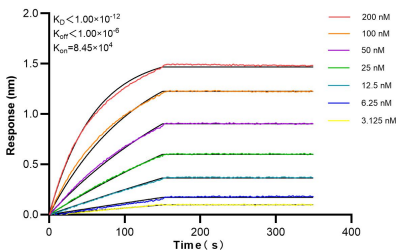
human placenta tissue were subjected to SDS PAGE followed by western blot with 84813-1-RR (ALPPL2 antibody) at dilution of 1:10000 incubated at room temperature for 1.5 hours. This data was developed using the same antibody clone with 84813-1-PBS in a different storage buffer formulation.



Immunohistochemical analysis of paraffin-embedded human placenta tissue slide using 84813-1-RR (ALPPL2 antibody) at dilution of 1:1000 (under 10x lens). Heat mediated antigen retrieval with Tris-EDTA buffer (pH 9.0). This data was developed using the same antibody clone with 84813-1-PBS in a different storage buffer formulation.



Immunohistochemical analysis of paraffin-embedded human placenta tissue slide using 84813-1-RR (ALPPL2 antibody) at dilution of 1:1000 (under 40x lens). Heat mediated antigen retrieval with Tris-EDTA buffer (pH 9.0). This data was developed using the same antibody clone with 84813-1-PBS in a different storage buffer formulation.



Biolayer interferometry (BLI) kinetic assays of 84813-1-RR against Human ALPPL2 were performed. The affinity constant is below 1 pM.