

For Research Use Only

TLR6 Recombinant antibody

Catalog Number: 84811-1-RR



Basic Information

Catalog Number:

84811-1-RR

Concentration:

1000 µg/ml

Source:

Rabbit

Isotype:

IgG

GenBank Accession Number:

BC111755

GeneID (NCBI):

10333

UNIPROT ID:

Q9Y2C9

Full Name:

toll-like receptor 6

Calculated MW:

480 aa, 56 kDa

Observed MW:

100 kDa

Purification Method:

Protein A purification

CloneNo.:

241926A1

Recommended Dilutions:

WB 1:5000-1:50000

Applications

Tested Applications:

WB, ELISA

Species Specificity:

human, mouse

Positive Controls:

WB : mouse brain tissue,

Background Information

TLR6, also known as CD286, belongs to the Toll-like receptor (TLR) family which is important in the innate immune response to pathogens. TLRs are highly conserved from Drosophila to humans and share structural and functional similarities. TLR6 can form a heterodimer with TLR2. TLR6 and TLR2 are both recruited to the macrophage phagosome, where they recognize peptidoglycan, a Gram-positive pathogen component (PMID: 11095740). TLR6 interacts with CD36, following CD36 stimulation by oxLDL or amyloid-beta 42, and forms a heterodimer with TLR4. The trimeric complex is internalized and triggers an inflammatory response.

Storage

Storage:

Store at -20°C. Stable for one year after shipment.

Storage Buffer:

PBS with 0.02% sodium azide and 50% glycerol, pH7.3

Aliquoting is unnecessary for -20°C storage

For technical support and original validation data for this product please contact:

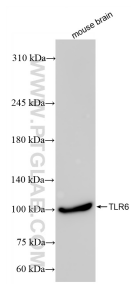
T: 4006900926

E: Proteintech-CN@ptglab.com

W: ptgcn.com

This product is exclusively available under Proteintech Group brand and is not available to purchase from any other manufacturer.

Selected Validation Data



mouse brain tissue were subjected to SDS PAGE followed by western blot with 84811-1-RR (TLR6 antibody) at dilution of 1:10000 incubated at room temperature for 1.5 hours.